

Canon

 **imagePROGRAF**
iPF MFP M40

imagePROGRAF



TECHNICAL DOCUMENTS

MFP LARGE-FORMAT IMAGING





imagePROGRAF iPF MFP M40 System

Large-format scan-to-print/
file/share solutions



The Canon imagePROGRAF iPF MFP M40 systems are multicomponent, multifunction solutions for architects, engineers, construction, GIS, and other professionals who need to scan, edit, save, share, and print large-format documents easily and efficiently.

FEATURES

- **M40 Scanner** with SingleSensor technology assembly* delivers incredibly fast and accurate scan speeds.
- **SmartWorks MFP** is a scan-to-print/file/share software that includes custom presets, image enhancements, and cloud integration.
- **Direct Print & Share** is Canon's Cloud Portal software for file sharing—now with Drag & Drop printing capabilities.
- **Customizable System** lets you choose between 36" and 44" printers for maximum versatility.
- **Computer, Touch-Screen Monitor, and Stand** are all included in the system.

* SingleSensor technology assembly means that multiple sensors are contained in one assembly device.

imagePROGRAF MFP

VERSATILITY

Choose the printer that best fits your workflow—and budget. With five imagePROGRAF models in the iPF MFP M40 system line-up, it's easy to customize your system.

CANON TECHNOLOGY

Unique 5-Color Reactive Ink System

- High resolution: up to 2400 x 1200 dpi output
- A double set of Matte Black ink channels in the print head maximizes monochrome print speed
- Economy print mode helps cut down ink costs for draft prints
- 15,360-nozzle print-head with FINE technology

MORE THAN JUST DRAWINGS

Canon's imagePROGRAF 5-color line of printers has what you need to help simplify, strengthen, and complete your workflow. For poster creation made simple, Canon's **PosterArtist Lite** software gives you the tools you need to help you produce an eye-popping banner or display in just a few easy steps. Also included are a **Print Plug-in for Microsoft® Office** and **Accounting Manager*** software to help you keep track of ink, media, and total job costs.

*PC only



iPF825



iPF815

iPF825/iPF815

- 44" 5-color, large-format printers
- Dual-roll capability with automatic switching for enhanced production (iPF825 only)
- Large-capacity ink tanks (330 ml and 700 ml tanks available)
- Built-in hard drive
- Sub-ink-tank system



iPF785



iPF780

iPF785/iPF780

- 36" 5-color, large-format printers
- High-speed printing, Arch D (24" x 36") in 21 seconds in fastest mode
- Flat stacker/basket neatly stacks up to 20 plain paper prints, 24" x 36" in size
- Assisted top-loading media guide rails
- Built-in 320 GB hard drive (iPF785 only)
- Large-capacity ink tanks (130 ml and 300 ml available)



iPF760

iPF760

- 36" 5-color, large-format printer
- Borderless printing
- Bundled with a variety of software solutions to help enhance your workflow
- Entry-level, economy solution

imagePROGRAF iPF MFP M40 SYSTEM

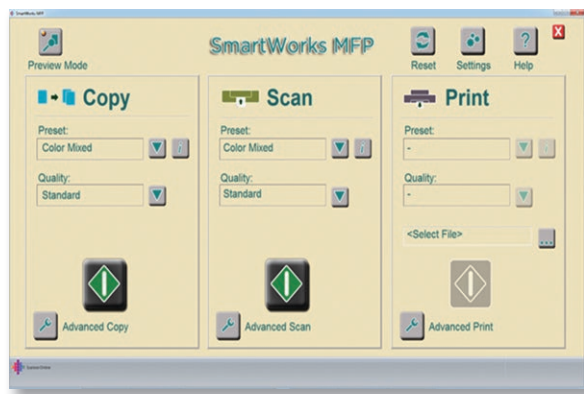
M40 SCANNER



The M40 scanner with SingleSensor assembly technology brings the MFP solution to a whole new level. Users have the ability to scan documents at incredible speeds and, with the included USB 3 connection, experience data transfer speeds of up to 10 times faster than on previous MFP models! The intuitive control panel embedded on the scanner helps make operation of the device incredibly easy, and its compact design helps space become a non-issue when using and storing the device.

- Optical resolution of 1200 dpi
- Scan speeds of 13 inches per second monochrome and 3 inches per second color
- Capability to accept media of different thicknesses (up to 2 mm)
- Ability to scan up to a 26-foot (8 m) document to PDF or JPEG and up to a 50-foot (15.2 m) document to a TIFF file

SMARTWORKS MFP SOFTWARE



The included SmartWorks MFP scan-to-print/file/share software includes:

- A simple-to-use interface for easy navigation
- The ability to add custom presets with one-touch retrieval for those often-used settings
- Image enhancements for white point adjust, black point adjust, sharpen, mirror, and invert
- Full integration with Canon's Direct Print & Share Cloud Portal software

SYSTEM

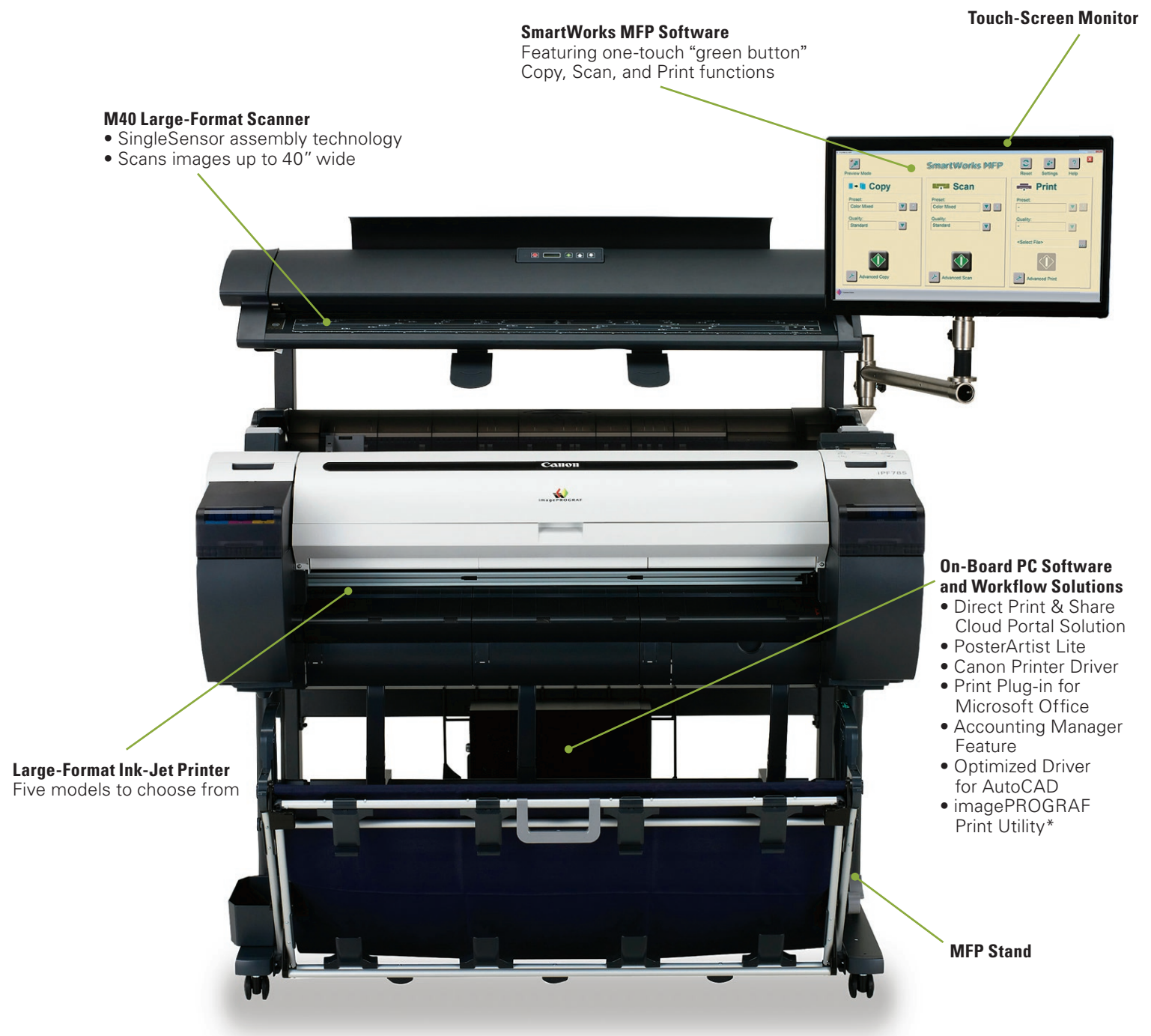
Experience the vast customization options that come with your MFP system. The Canon imagePROGRAF iPF MFP M40 large-format imaging system is designed to be a complete scan-to-print, file, and share cloud solution. The system includes a select imagePROGRAF iPF large-format printer, M40 large-format scanner, MFP stand, computer, SmartWorks MFP software, and a large, touch-screen monitor. This solution provides a fast and effective system for printing, copying, archiving, and distributing maps, drawings, renderings, site and facilities management plans, design and layout proofs, posters, and more.

With the iPF785, iPF780, or iPF760 printer, the integrated stand allows the user to position the monitor in a variety of configurations to provide optimal functionality and comfort. The user can also mount the stand onto the printer for a true, all-in-one structure or keep them separate for easy maneuverability. The MFP solution includes a 22" multitouch-screen monitor, and users have the option of selecting to have their scanned documents come straight out the back of the scanner or rewind to the front for easy retrieval. Customization is truly brought to a whole new level with the iPF MFP M40 system.

- Fully operational PC for vast customization and creativity
- Integrated stand for structural customization (iPF785, iPF780, and iPF760 printers only)

MARKETS

The iPF MFP M40 system is designed with you in mind to help bring a fully operational work solution to you out in the field and provide you with all the tools to help enhance productivity with your technical documents. Choose the right printing solution to meet your workflow requirements, whether you have a low-volume architecture firm or a high-production enterprise environment. See how the MFP solution can help bring your business to the next level. This solution's capabilities help you produce high image quality at incredible speeds and make it a welcome addition for anyone looking to advance in the AEC, GIS, and other technical industries.



SmartWorks MFP Software
Featuring one-touch “green button”
Copy, Scan, and Print functions

Touch-Screen Monitor

M40 Large-Format Scanner

- SingleSensor assembly technology
- Scans images up to 40” wide

**On-Board PC Software
and Workflow Solutions**

- Direct Print & Share
Cloud Portal Solution
- PosterArtist Lite
- Canon Printer Driver
- Print Plug-in for
Microsoft Office
- Accounting Manager
Feature
- Optimized Driver
for AutoCAD
- imagePROGRAF
Print Utility*

Large-Format Ink-Jet Printer
Five models to choose from

MFP Stand

* Available at the App Store.

WORKFLOW AND CREATIVE SOLUTIONS *IN THE BOX*

imagePROGRAF iPF MFP M40 systems include a variety of software programs to help you manage your printing process as well as expand your creative capabilities.

ENHANCED DIRECT PRINT & SHARE*

Users are given the ability to scan and upload documents to their own cloud storage space. Easily print PDFs, TIFFs, JPEGs, and HP-GL/2 files through the user-friendly interface.

New Features

- "Shortcut Print" provides drag-and-drop printing capabilities
- HP-GL/2 file support
- WebDAV support for cloud storage
- Integration with software solutions such as SmartWorks MFP V3, AutoCAD, and PosterArtist

NEW imagePROGRAF PRINT UTILITY**

This iOS-based app allows users to print PDF files from their iPad®.

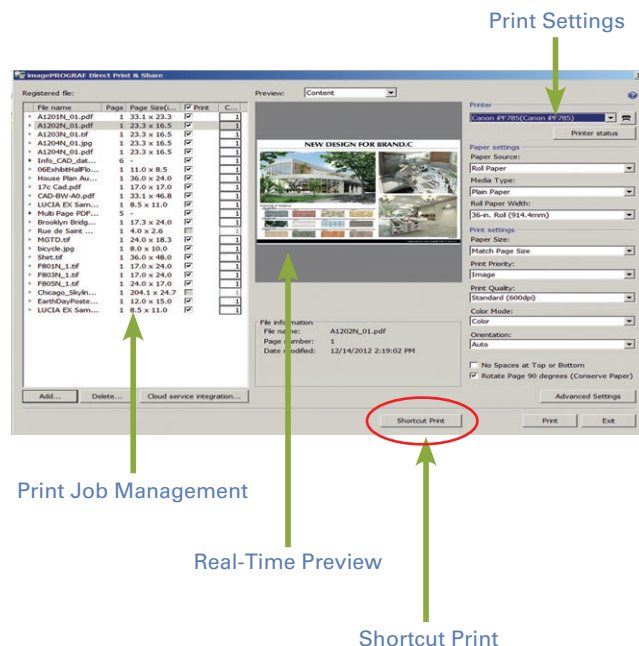
ALL THIS WITH EACH PRINTER

- PosterArtist Lite – Poster creation software
- Print Plug-in for Microsoft Office (PC only)
 - Print directly from Office applications
- Accounting Manager (PC only)
 - Track printing costs
- Remote User Interface
 - Check printer status remotely
- Optimized Driver for AutoCAD

NEW OPTIONAL SMARTWORKS MFP PLUS

Users who purchase this optional software will have the ability to scan to multipage PDF and PDF/A file formats, perform RGB color corrections, and automatically crop borders on files using the preview mode.

iPF Direct Print & Share



imagePROGRAF Print Utility



Available at the App Store.

* Your server must be compatible with a WebDAV-enabled cloud account, including, but not limited to, Google, Carbonite, or Rackspace to take advantage of the cloud functionality. Storage capacity, and any pricing thereof, is based on the third-party cloud provider's current offering, at its sole discretion. Your cloud account is subject to the third-party cloud provider's terms and conditions. Neither Canon Inc. nor Canon U.S.A., Inc. represents or warrants any third-party product, service, or feature referenced hereunder.

** Available at the App Store. Compatible with iPad® 2 or later, running iOS 6.1 or later. Data charges may apply. Printed output will be the same size as original file. Mobile device and large-format printer must utilize the same network. Printer must be connected to the same router that the mobile device is connected to via wireless capability. Wireless performance may vary based on terrain and distance between the printer and wireless network clients. In order to print from imagePROGRAF Print Utility, user must open his/her PDF file in another, supported iPad app. Then, the user would select "Open In" and choose the Print Utility app.

imagePROGRAF

PRINTER SPECIFICATIONS



Output Width

44" Wide

Number of Ink Tanks

5

Color Set

Dye: Cyan, Magenta, Yellow, Black

Pigment: Matte Black

Ink Type

Dye/Pigment Reactive Ink

Ink Tank Capacity

330 ml and 700 ml

Maximum Print Resolution (dpi)

2400 x 1200

Total Number of Nozzles

15,360

Ink Droplet

Consistent 4 pl

Maximum Print Speed

(1200 x 1200 dpi on Plain Paper)

688 sq. ft. per hr.*

Print Speed: Best Quality Mode

(2400 x 1200 dpi on Photo Gloss Paper)

89 sq. ft. per hr.*

Software/Utilities/Applications

- Canon Printer Driver
- HDI Driver
- Print Plug-in for Microsoft Office
- Digital Photo Front-Access
- Remote User Interface
- Media Configuration Tool
- Supports HP-GL/2, HP RTL Files
- PosterArtist Lite
- PosterArtist (optional) (PC only)
- Third-Party RIPs (optional)

Special Features

- Dual Media Rolls (iPF825 only)
- Accounting Manager (PC only)
- Economy Color Mode
- Sub-Ink-Tank System
- Independent Rotary Cutter

Printer Dimensions (H x W x D)

iPF825: 45" x 74.5" x 50.9" (with basket)

iPF815: 45" x 74.5" x 38.4"

Printer Weight

iPF825: Approx. 417 lb.

iPF815: Approx. 305 lb.

Printer Memory

384 MB RAM

32 GB Dedicated File Processing Memory

Hard Drive

160 GB

Connectivity

USB 2.0: 10/100Base-T/TX

Operating System**

Windows®, Macintosh®

* OS: Windows XP SP2, CPU: Pentium® 4 3.2 GHz, RAM: 1 GB, Application: Adobe® Photoshop® 7.0, Interface: USB 2.0 Hi-Speed, Data used: ISO/JIS-SCID No.5, Output image size: A1 (580 mm x 724.9 mm) for iPF655/650/610, A2 (410 mm x 512.5 mm) for iPF510 using optional Roll Feed. Measured by Canon Inc. Each print time does not include data transfer time. The print speed may vary depending on the data volume and size, PC, application, software, media type, and interface.

** Please visit www.usa.canon.com/download for availability.



PRINTER SPECIFICATIONS

Output Width

36" Wide

Number of Ink Tanks

iPF785/780: 5

iPF760: 6

Color Set

Dye: Cyan, Magenta, Yellow, Black

Pigment: Matte Black

Ink Type

Dye/Pigment Reactive Ink

Ink Tank Capacity

130 ml[▲] and 300 ml[■]

Maximum Print Resolution (dpi)

2400 x 1200

Total Number of Nozzles

15,360

Ink Droplet

Consistent 4 pl

Maximum Print Speed[■]

(1200 x 1200 dpi on Plain Paper)

788 sq. ft. per hr.*

Print Speed: Best Quality Mode[■]

(2400 x 1200 dpi on Photo Gloss Paper)

79 sq. ft. per hr.*

Software/Utilities/Applications

iPF785/780/760

- Canon Printer Driver
- Direct Print & Share Cloud Portal Solution
- imagePROGRAF Print Utility**
- Optimization Module for AutoCAD (PC only)
- Print Plug-in for Microsoft Office
- Remote User Interface
- Media Configuration Tool
- PosterArtist Lite
- PosterArtist (optional) (PC only)
- Third-Party RIPs (optional)

Printer Dimensions (H x W x D)

41.8" x 51.3" x 34.5"

41.8" x 51.3" x 43.3" (when Basket is in the extended position for flatbed stacking)

Printer Weight

Approx. 141.3 lb.

Special Features

iPF785/780/760

- Flat Stacker/Basket
- Interface Lock
- Accounting Manager (PC only)
- Sub-Ink-Tank System
- Top-loading Roll Feed

Printer Memory

256 MB (32 GB iPF785 only)

Hard Drive

320 GB (iPF785 only)

Connectivity

USB 2.0: 10/100/1000Base-T/TX

Operating System***

Windows, Macintosh

[▲] The starter ink tanks in the package with the printer are not the same capacity as the replacement ink tanks specified here.

[■] iPF785/780 models only.

* OS: Windows XP SP2, CPU: Pentium 4 3.2 GHz, RAM: 1 GB, Application: Adobe® Photoshop® 7.0, Interface: USB 2.0 Hi-Speed, Data used: ISO/JIS-SCID No.5, Output image size: A0 (827 mm x 1033.8 mm). Measured by Canon Inc. Each print time does not include data transfer time. The print speed may vary depending on the data volume and size, PC, application, software, media type, and interface.

** Available at the App Store.

*** Please visit www.usa.canon.com/download for availability.

imagePROGRAF

M40 SCANNER SPECIFICATIONS



Scan Speed*

- 48-bit Full Color @ 200 dpi: 3" (per second)
- 8-bit Grayscale and Monochrome @ 200 dpi: 13" (per second)

Scan Modes

- 16.7-million Color RGB (24-bit)
- 256 color RGB Adaptive Indexed Color Palette (8-bit)
- 256-level Grayscale (8-bit)
- Black and White (1-bit)

Color Space

Normalized RGB

Resolution

- 9600 dpi (max. interpolated)
- 1200 dpi (optical)

Scan Accuracy**

+/- 0.1% ; +/- 1 pixel

Maximum Image Width

40"

Maximum Media Width

42"

Maximum Scan Length

Up to 315" (590" TIFF files)

Maximum Media Thickness

0.079" (2 mm)

Media Feed System

Single large diameter precision ground drive roller; adaptive CIS media focus management and media guide mechanism; intuitive face-up, front-loading, and front/rear-exit media path with side justification; automatic media size detection with reliable optical media sensors

Digital Imaging Technology

Contact Image Sensor (CIS) Technology (SingleSensor Assembly)

- 5x close-spaced "deep focus" CIS (25,000 pixels)
- 48-bit RGB digital color image capture (50,400 pixels)
- 16-bit grayscale image capture
- Panchromatic monochrome and black and white
- Bi-directional extra long-life LED light system for optimum object illumination and instant-on scanning capability

Digital Image Processing

- 2D Intelligent Adaptive Thresholding (IAT) (1-bit mode)
- Fixed Threshold Black and White (1-bit mode)
- Dynamic Normalization Application (DNA) with 16-bit Super Sampling

User Status and One-Touch Operation

Center mounted LCD scanner control panel; walk-up operation and user selection of scanner mode with stop, forward, rewind, scan, and copy buttons; local language options, panel overlay, and Magnetic Media Guide

Included Software

- SmartWorks MFP Scan-to-file, Copy, E-mail with Real-time Image Viewer. Supports TIFF, JPEG, TIFF G4, and PDF
- Direct Print & Share Cloud Portal Solution

Operating System

Windows 7 Professional (64-bit)

User Maintenance

Installable Plug-and-Play Scanner; Simple Cleaning

Scanner Interface Kit

Superspeed USB 3.0 (PC Connector Compatible with USB 2.0 and USB 3.0 sockets)

Operating Environments

10 – 35°C, 35-80% RH, Non-condensing

External Power Supply

100-250 VAC Autosensing +/- 10%, 50-60 Hz

Scanner Power Consumption

- 53 Wh (Scanning)
- 5 Wh (Stand-by)

Compliances

VCCL, CB, CE, FCC, UL, RoHS, ENERGY STAR®

Stand and Scanner Dimensions

Height: Swing Arm: 57.5"
Straight Arm (max.): 66"
Width: Swing Arm (max.): 69.9"
Straight Arm: 53.6"
Depth: 31.5"

Stand and Scanner Weight

Approx. 120.4 lb.

What's In The Box?

- M40 Scanner with Power Cord and USB 3.0 and USB 2.0 Cables (scanner to server)
- 2 Meter USB Cable (server to printer)
- M40 MFP Stand
- M40 MFP Stand Assembly Instructions
- SmartWorks MFP Software
- Computer
- Flat Panel, Touch-screen Display
- Installation and Operation Manual
- Operator Manual on CD-ROM
- Document Return Guide
- Magnetic Paper Guide

* The scan rate is proportional across the full range of resolutions supported by the scanner. Actual scan times will depend on the host system performance. Quoted top speeds may be limited by the effective bandwidth of the USB 2 and is not guaranteed for all media types.

** The quoted scan accuracy may vary depending on the operating environment and the thickness of the media.

The imagePROGRAF iPF MFP M40 systems contain multiple components, some of which are manufactured by third parties. To the extent that such third-party offerings come with limited warranties, such limited warranties are hereby passed to the purchaser, and Canon shall have no obligation or any liability with respect to such third-party offerings.

This document was created by Canon U.S.A., Inc. and is intended for use by Canon's internal sales team as an educational tool for dealer and reseller sales representatives. The information contained in this document should not be altered without prior written permission from Canon U.S.A., Inc.

As an ENERGY STAR® Partner, Canon U.S.A., Inc. qualified these models as meeting the ENERGY STAR energy efficiency criteria through an EPA recognized certification body. ENERGY STAR and the ENERGY STAR mark are registered U.S. marks. Canon, imagePROGRAF, and the GENUINE logo are registered trademarks of Canon Inc. in the United States and may also be registered trademarks or trademarks in other countries. Apple and iPad are trademarks of Apple Inc., registered in the U.S. and other countries. Microsoft is either a registered trademark or trademark of Microsoft Corporation in the United States and/or other countries. Google is a trademark of Google Inc. All other referenced product names and marks are trademarks of their respective owners. Prices, specifications, and availability subject to change without notice. Actual prices are set by individual dealers and may vary. All printout images and effects are simulated. MFP shown with iPF825 and iPF785 printer. Not responsible for typographical errors.

©2014 Canon U.S.A., Inc. All rights reserved.

0187W497
0714R-iPFM40-5M-LIH



1-800-OK-CANON
www.usa.canon.com

Canon U.S.A., Inc.
One Canon Park
Melville, NY 11747