

# SAVIN®

## 3590DNP Digital Duplicator

DUPLICATE > ACCELERATE > ECONOMIZE > REFINE > **SAVE >**



**High-speed production,  
high-quality results.**

## Continuous production and impeccable results for less.

Twice the production speed of a copier for half the cost—in production and print-for-pay environments, this combination simply can't be beat. That is until you add in the offset quality of the Savin 3590DNP Digital Duplicator. It's the ideal device when speed, cost and quality count.



The new, large LCD panel makes it easy to print any job and program frequent functions.

### Faster than virtually any copier out there.

Watch your overall production capacity increase to exciting new levels. Output as many as 135 prints per minute on 8.5" x 11" stock and 120 prints per minute when you load 11" x 17" stock into your Savin 3590DNP. Because you don't need to deal with the time-consuming set up that an offset press involves, it also dramatically reduces your total production time.

### Quality that rivals offset printing.

Trust your Savin 3590DNP to deliver picture perfect results from the first print to the last. The Savin 3590DNP features newly reengineered masters and fast-drying inks that together create impeccably solid fill-in, smooth halftones and beautiful photo images. It also uses an improved dual-cylinder and paper-clamping system – much like an offset press – that creates exacting registration even on multi-color print jobs.

- True 600 x 600 dpi image resolution is delivered by the Savin 3590DNP's advanced image-processing technology.
- New ink and master eliminate set-off and print-through for maximum print quality and less wasted time and paper.
- Evenly percolated ink and sharp master holes create crisp, clean text from headlines to body copy.



The Automatic Document Feeder ensures that the master is cut to the most efficient size. This saves up to 33% of the cost of masters without using the optional short drum.

## Packed with timesaving advantages.

While the Savin 3590DNP's print speed alone accelerates production, its numerous time-saving features keep workdays running smoothly . . . and with fewer interruptions. For example, the new masters last twice as long. The large-capacity paper tray maximizes time between refills. Even the new ink dries extra fast so you don't have to waste time waiting between colors. In addition, you can:

- Get to work fast with quick-start technology.
- Send, program and monitor print runs from the convenience of your desktop or any connected computer.

## Advanced paper handling.

The Savin 3590DNP's advanced drum system prevents costly production delays. You can confidently load special and delicate stock because the cold-process technology won't damage the paper.

In addition, the paper delivery tray precisely aligns paper and reduces set-off using innovative buffer fins that slow the paper so it has more time to dry before settling into the output tray.

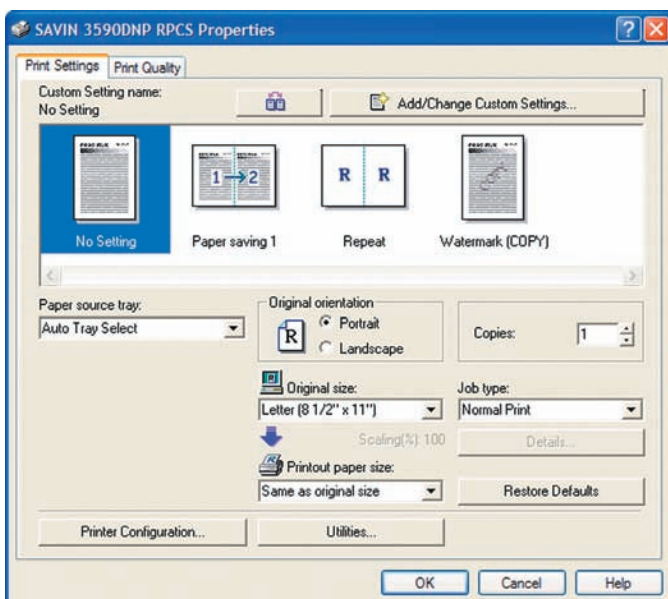


The 3590DNP has a single master cylinder for a self-loading master process, and ink cartridges that load and remove quickly and neatly.

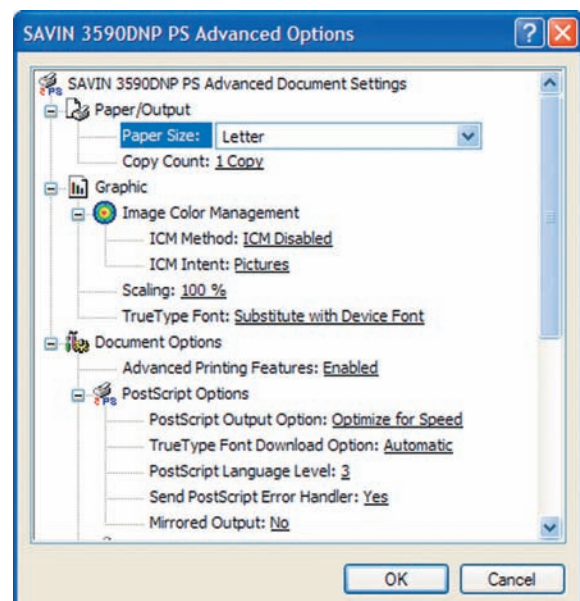
## Years of low-maintenance durability.

The high-volume print business is often a race against time; that's why the Savin 3590DNP was built to be a long-distance runner. It maintains its blazing speed of 135 prints per minute while outputting 600,000 prints a month and over 15 million prints in its lifetime. Long after the average copier has been replaced, your Savin 3590DNP still will be going strong, with less service and fewer maintenance calls.

- Durable motor lasts 50% longer.
- Fewer moving parts and a unique cold-process technology maximize life.

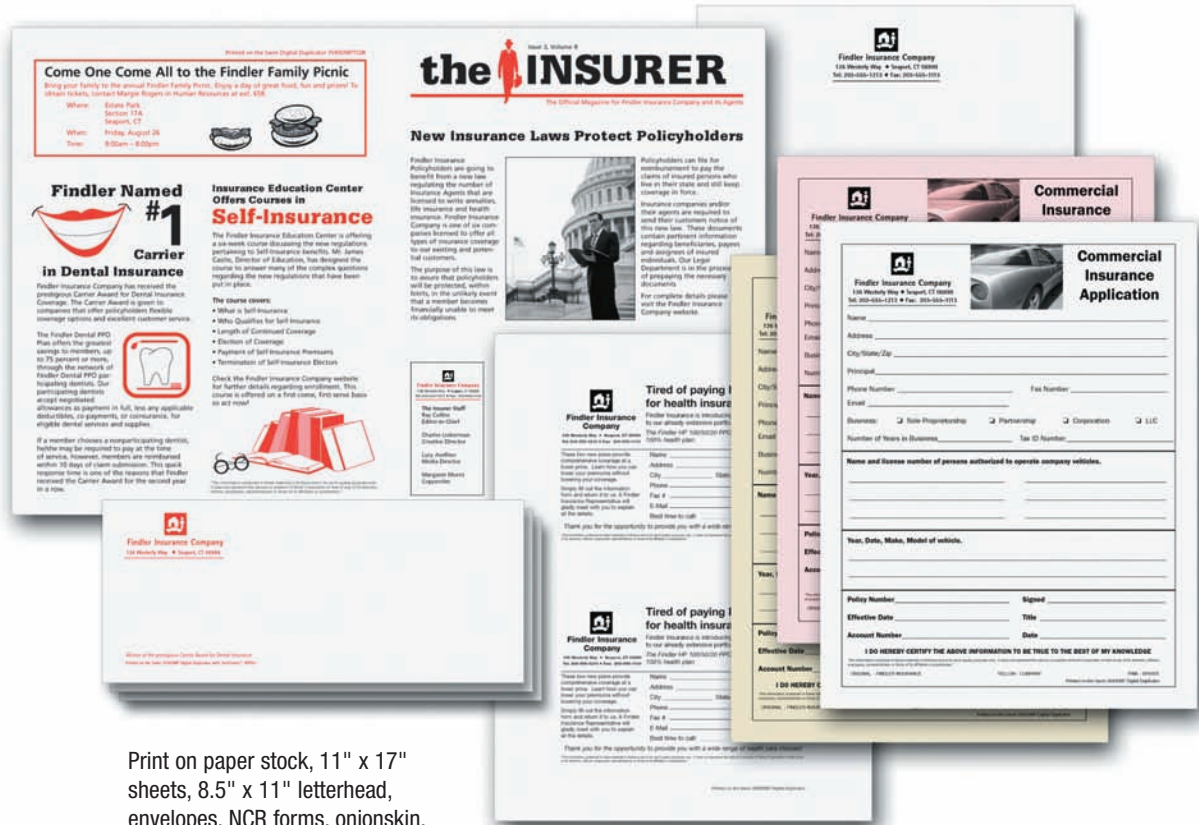


Use the optional PostScript® 3 interface to run jobs easily from any PC, Mac or networked system.



Savin's Refined Print Command Stream (RPCS) features a user-friendly, icon-based page description language that makes setting up and printing jobs easier than ever.

**DUPLICATE > ACCELERATE > ECONOMIZE > REFINE > SAVE >**



Print on paper stock, 11" x 17" sheets, 8.5" x 11" letterhead, envelopes, NCR forms, onionskin, card stock and 25% cotton bond.

## Outstanding cost savings.

Because of its ability to produce high-volume, high-quality output at a fraction of a penny per copy, the Savin 3590DNP is an excellent business investment. In fact, it can practically deliver the quality and long life of an offset press. Energy-saving features also protect your bottom line; for instance, it automatically cuts power 85% during printing lulls.

## If you can use a copier . . .

You'll quickly become an expert on your Savin 3590DNP. It's so simple to use that, whether you're standing at the device using the large LCD screen or accessing it from your desktop, it's easy to produce even multi-color jobs.

- Unlike an offset printer, which requires hours of training to master, your Savin 3590DNP's user-friendly design lets anyone in your organization feel comfortable after just a few minutes of training.
- Web Image Monitor, SmartDeviceMonitor and DeskTop Binder utilities give you fast, easy desktop control over everyday systems management.

## Your Environmental Partner

The Savin 3590DNP Digital Duplicator meets our longstanding commitment to developing office solutions with superior energy and supply-saving features, including:

- Instant Start Up (no warm up) Technology
- Power-saving Sleep Modes
- Zero Ozone Emissions



Our earth,  
Our tomorrow

**ADF**  
Handles multi-page originals up to 11" x 17"

**Print Speed Selector**  
Gives you total control over print speed: from 60 to 135 sheets per minute

**Master Eject Unit Handle**  
Allows you to pull out the master eject unit quickly and easily

**Paper Delivery Tray**  
Neatly stacks completed prints

**Front Door**  
Easy-access front cover features an overall clean design

**QWERTY Soft Keyboard**  
Allows you to key in job programs and other customized job applications

**Control Panel**  
Large and bright, offering copier-style simplicity for intuitive operation

**Master-Making Unit**  
Strategically placed so it's easy to install the master roll

**Paper Feed Side Plates**  
Guides paper straight into the system and helps prevent misfeeds

**Paper Feed Tray**  
Accepts a wide range of sizes and weights

**Drum Unit**  
Master is wrapped around this unit



**LS3000R**  
Boost paper capacity to 3,000 sheets with the LS3000R and triple your uninterrupted output volume.



**SeriPrinter Model 25**  
Eliminate smudges and off-set with a SeriPrinter – it instantly dries ink so you can print multiple colors one after the other with no waiting.



**TC-IIR**  
Enjoy twice the production in half the time – load color imaged cylinders into your TC-IIR production printer and print two colors with one pass.

## SPECIFICATIONS

Configuration	Desktop
Printing Process	Digital Ink, Dual Cylinder System
Power Source	120V, 60Hz
Dimensions (WxDxH)	55.9" x 27.8" x 40.2" (with Platen Cover)
Max. Monthly Volume	600,000 prints
PM Interval	1,200,000 prints (or 12 months)
Print	Single color one pass
Print Speed	60 - 135 sheets/min. (6 steps)
Resolution	600 x 600 dpi
First-Print Time (A4)	19 seconds
Paper Feed Capacity	1,000 sheets std.; (20 lb.) 3,000 sheets opt.
Paper Delivery Capacity	1,000 sheets std.; 3,000 sheets opt.
Paper Size	2.8" x 5.8" to 12.8" x 17.6"
Print Area (max.)	11.4" x 16.6"
Original Size	Platen: 4.1" x 5.0" to 11.8" x 17.0" Opt. ADF: 5.8" x 8.3" to 11.7" x 34.0"
Original Type	Book, Sheet
Auto Document Feeder	Yes (opt. 50-sheet)
Image Modes	Letter, Photo, Letter/Photo Auto Separation, Tint, Pencil
Reduce/Enlarge	4R/3E; directional; zoom ratio
Image Position	H: + 15mm (by 0.25mm) (Horizontal/Vertical) V: + 10mm (by 0.25mm)
Interactive	Yes
Touch-Screen	

Masters	255 L-size sheets per roll
Master Run Length	4,000
Master Feed Capacity	200 masters (A3)
Eject Master Box (A3)	Approx. 100 masters
Paper Clamper	Yes
Job Separation	Yes
Security Mode	Drum lock; ejected master box lock
Program Mode	Yes (9 programs)
Auto Shut-Off	Yes
Skip Feed	Yes
Auto Density Control	Yes
Print Density Control	Yes (2 levels)
Image Storing	Yes (via opt. HDD)
Stamping	Yes (via opt. HDD)
Auto Color Drum	Yes
Detection	
Special Features	User Codes (200); Image Combine (2 in 1, 4 in 1, custom); Repeat Print (2/4/8/16 in 1); Overlay; Double-feed Detection; Quality Start
Controller	Embedded, Standard
Color Drum	Optional
Cabinet	Optional
Platen Cover	Optional
Network Interface	USB2.0; Ethernet Std; Parallel, IEEE802.11b Wireless opt.
PostScript 3	Yes (opt. module)

## PERIPHERALS

Large Capacity System	Yes (optional LS3000R)
Twin Color	Yes (optional TC-IIR)
SeriPrinter Model 25	Yes (optional)
VDPH1	Yes (optional)

[www.savin.com](http://www.savin.com)

Savin Five Dedrick Place, West Caldwell, NJ 07006  
SAVIN® is a registered trademark of Ricoh Corporation. Windows® and Windows® 95/98/Me/NT4.0/2000/XP are registered trademarks of Microsoft Corporation. Macintosh®, Mac® OS and AppleTalk® are registered trademarks of Apple Computer, Inc. Adobe® and PostScript® are registered trademarks of Adobe Systems, Inc. RPCS™ is a trademark of Ricoh Company, Ltd. All other trademarks are the property of their respective owners. Print speed may be affected by network, application or PC performance. Specifications and external appearances are subject to change without notice. Products are shown with optional features.  
♻️ Printed in U.S.A. on recycled paper. S2134

