

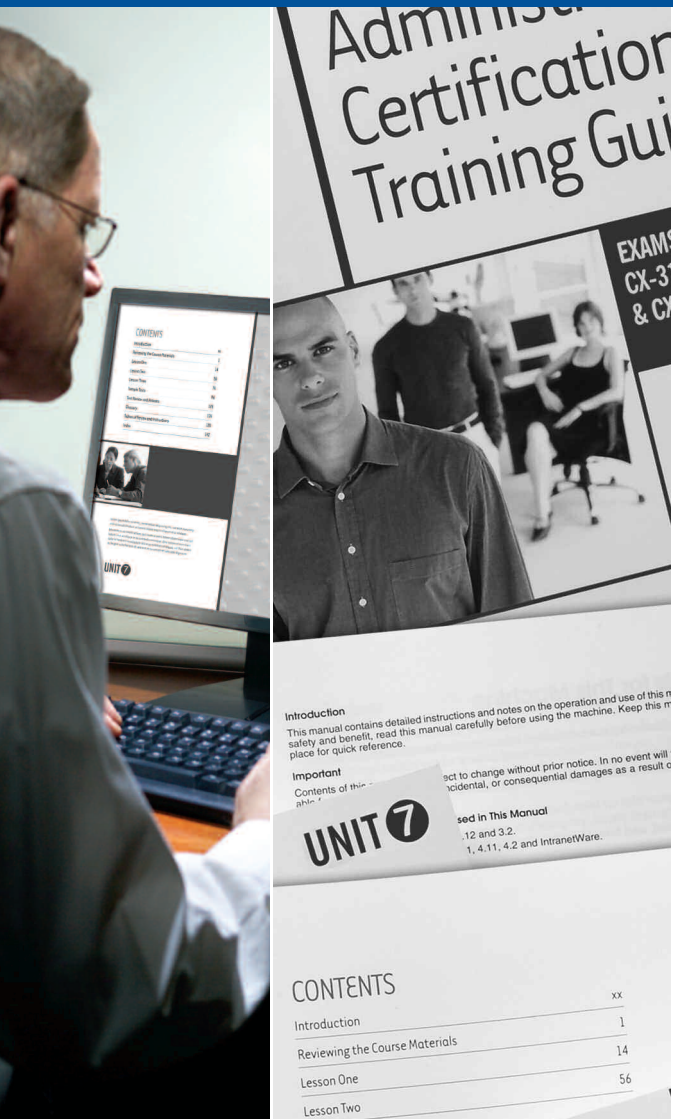
CREATE >

DISTRIBUTE >

DELIVER >

MANAGE >

ADAPT >



**Energize your office with
innovative all-in-one technology.**

Designed for innovative workflow.

Today's offices understand what it takes to thrive in tough economic times. You have to accomplish more with fewer resources. Find every available way to reduce costs and optimize processes, plus ensure security and support sustainability all without sacrificing ease of use. Introducing the new SAVIN® 9228/9233. Engineered for innovation with automated and customized workflow, these systems come equipped with powerful new solutions: the Personal Paperless Document Manager (PPDM™) software and the breakthrough App2Me® portable workflow solution. That's why the Savin 9228/9233 is the right choice to empower your office to handle document tasks with extraordinary speed and cost efficiency.



Find exactly what you need quickly and easily with the 8.5-inch wide color VGA LCD panel.

Highly Productive Performance

The Savin 9228/9233 makes it easy to create, output, finish and distribute critical documents wherever they need to go with outstanding speed and efficiency.

- Enhance productivity by printing up to 33 pages-per-minute.
- Scan color and black & white documents and distribute them at no cost with a full slate of “Scan-to” capabilities.
- Make every document look compelling with three professional finishing options, including a 1,000-Sheet Booklet Finisher with hole-punch capabilities.

Zero-Cost Document Distribution

High-performance scanning turns the Savin 9228/9233 into a versatile yet incredibly inexpensive document distribution center.

- Capture reports, plans, analyses and other originals via color or black & white scanning, then share them at no cost with Scan-to-Email/Folder/URL.
- Distribute documents more efficiently by pulling recipients’ e-mail addresses directly from up to five LDAP servers.
- Check scan accuracy and avoid time-consuming rescans by previewing full-color thumbnails on the control panel prior to distribution.
- Shrink file sizes on scanned color documents with High Compression PDF, without compromising final output quality.

Make Documents Work for You



Personal Paperless Document Manager (PPDM) enables users to capture, combine, convert and share the three most prominent document types: paper, PDFs and Microsoft® Office files.

- Make document distribution easy, secure and productive. Send paper and electronic files to virtually any destination, including e-mail, FTP sites, Web folders, Microsoft SharePoint and content management systems.
- Create secure, searchable PDFs from text files, spreadsheets and scanned paper.
- Transform paper originals into fully editable Microsoft Office files, PDFs and fillable forms.
- Create custom workflows. When users authenticate to the system, the interface shows only the personalized view they created at their desktop computers.

Enhance Personalized Productivity



The App2Me® solution

revolutionizes document management, enabling users to create customized workflows and execute them anywhere they go.

- Download widgets to any client (desktop PC, laptop or Smartphone) and use them on any Savin MFP enabled with App2Me.
- Enjoy maximum convenience and a consistent experience at each App2Me-enabled MFP, which remains completely personalized no matter where you go.

- Simplify complex workflows. Widgets can be created to combine, distribute, edit and create documents, as well as perform many other tasks automatically.
- Maximize productivity. App2Me improves efficiency through widgets that control a virtually endless array of MFP, software or Web services-driven workflows.
- Create specialized widgets for virtually any need, in any framework across multiple platforms that App2Me supports, such as Google Desktop™ and more.

Engineered for Efficiency

Depend on the Savin 9228/9233 for the capabilities you need to complete document-driven tasks quickly, easily and cost-effectively.

- Control usage by setting print or copy quotas for up to 500 users. If the quota is exceeded, users can no longer access the device.
- Prioritize print and copy jobs with the Job Function List. Move time-sensitive jobs to the top of the queue for immediate output.
- Handle documents efficiently with support for PCL (standard) or Adobe® PostScript®3™ (optional).
- Reduce network traffic with PDF Direct Print. Send PDF files directly to the printer without opening additional software.

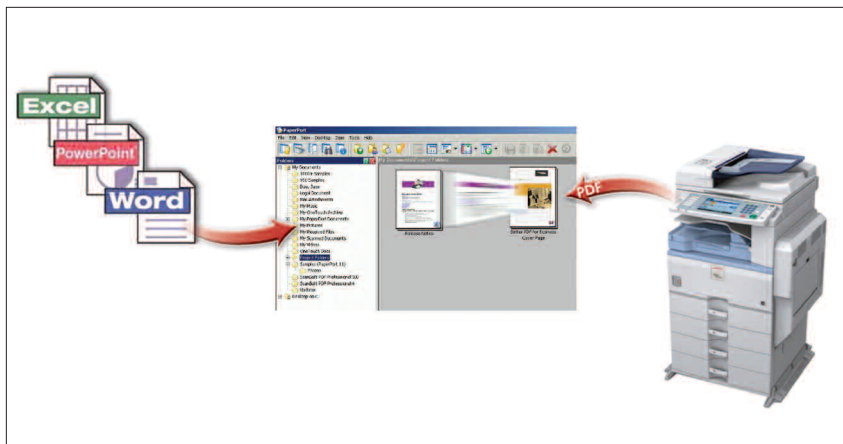
Color Scanning Workflow

Color scanning combined with Scan-to-URL improves project collaboration and reduces network traffic.



Personal Paperless Document Manager (PPDM)

Personal Paperless Document Manager (PPDM) lets users create unique workflows, combine multiple files in one PDF and convert scanned files into editable Microsoft® Office documents.



App2Me

Utilize time-saving and workflow-enhancing widgets with any App2Me enabled Savin MFP.



Sophisticated Fax Capabilities

Choose the Savin 9228/9233 for fast, user-friendly and innovative faxing.

- Send and receive faxes on up to three analog lines with the Super G3 modem, boosting fax capacity and significantly reducing delivery time.
- Deliver scanned documents directly to e-mail addresses with Internet Fax, which eliminates phone charges and wasted paper.
- Go completely paperless by automatically forwarding inbound faxes to e-mail addresses, network folders or the system's Hard Disk Drive (HDD).

Maintain Absolute Security

The Savin 9228/9233 protects documents no matter where they are in your workflow, using a complete array of advanced security technologies.

- Restrict access to the system with password protection. Or restrict usage rights by function, reserving certain capabilities for authorized personnel only.
- Protect confidential documents from unauthorized viewing with Locked Print, which eliminates the need for costly mail boxes.
- Use the DataOverwriteSecurity System (DOSS) to secure latent images remaining on the system's HDD.

Simple, Easy Management

The Savin 9228/9233 is designed to simplify a wide range of administrative tasks, including system management, device monitoring and troubleshooting.

- Access system settings, address books and more from your Web browser.
- Configure, monitor and manage your whole fleet of connected Savin devices right from your desktop.
- Generate alerts for low supplies or error detection with Auto E-Mail Notification.
- Automate meter submission, critical service event notification, low toner alerts and enable remote firmware updates with embedded @Remote™.

The Total Green Office Solution

Savin continues its long-standing commitment to developing office solutions with environmentally friendly and superior energy- and supply-saving features, without compromising productivity.



50-Sheet Automatic Reversing Document Feeder (ARDF) (optional)

Efficiently handles multi-page originals, even mixed sizes up to 11" x 17".

1,000-Sheet Booklet Finisher (optional)

Provides three destinations for output, including the ability to produce paginated, saddle-stitched, punched and folded booklets, greatly expanding your in-house capabilities.

1,000-Sheet or 500-Sheet Finisher also available.

2 x 500-Sheet Paper Trays (standard)

User-adjustable paper trays hold envelopes, plus a range of paper sizes up to 11" x 17" and weights up to 42 lb. Bond.

2 x 500-Sheet Paper Trays (optional)

Adjustable paper bank increases capacity to hold up to five different sizes and orientations of paper, reducing user intervention.

2,000-Sheet Tandem Large Capacity Tray also available.



Color Control Panel Large, full-color VGA display with a simplified display feature makes using the system easy to use and accessible for everyone.

Duplex Unit (standard) Provides stackless, two-sided printing — cutting paper, filing and postage costs.

100-Sheet Bypass Tray (standard) Holds a variety of paper types and sizes for printing envelopes, labels and transparencies.

One-Bin Tray (optional) Provides a cost-effective way to separate output generated from two different system functions, such as faxes and prints.

Easy-Access Tray Handles Unique design makes accessing trays fast and simple for everyone.

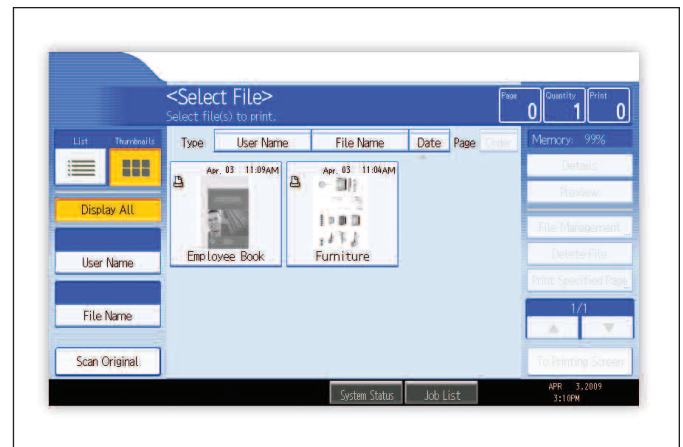
External Keyboard (option)

The optional keyboard provides an alternate way to enter data at the device.*



Document Server

Store up to 3,000 frequently used documents in the Document Server for instant reprinting, refaxing or scanning.



*Does not work with all applications and functions.

ENGINE/COPIER SPECIFICATIONS

Scanning Element	Flatbed with Moving CCD Array Image Sensor
Printing Process	Single Laser Beam Scanning & Electrophotographic Printing
Toner	Dry, Dual Component
System Memory (std./max.)	768/768 MB RAM
Hard Disk Drive	40 GB standard
Copy Resolution	600 x 600 dpi
Grayscale	256 levels
Exposure Adjustment	Manual & Automatic
Quantity Indicator	Up to 999
Original Type	Book/Sheet/Object
Maximum Original Size	Up to 11" x 17"
Copy Size	5.5" x 8.5" to 11" x 17"
Copy Type	Plain Paper, Transparencies, Letterhead, Pre-Punched Paper, Envelopes, Cardstock, Recycled
Warm-Up Time	22 seconds
First Copy Speed	4.5 seconds
Continuous Copying Speed	9228: 28 copies/minute (LTR) 9233: 33 copies/minute (LTR)
Power Source	120V/60Hz/12A
Dimensions	24.8"(W) x 25.7"(D) x 27.9"(H)
Weight	143 lbs.
Standard Paper Capacity	500 sheets x 2 trays, and 100-Sheet Bypass Tray
Optional Paper Capacity	500 sheets x 2 trays or 2,000-Sheet Large Capacity Tray
Paper Size	5.5" x 8.5" to 11" x 17" A5 to A3
Paper Weight	16 – 28 lb. Bond/60 – 105g/m ² (Tray 1 and Duplex) 14 – 42 lb. Bond/52 – 157g/m ² (Tray 2 and Bypass)
Standard Output Tray Capacity	500 sheets (Letter)
Reduction Ratios	250 sheets (Legal, Ledger) 25%, 50%, 65%, 73%, 78%, 85%, 93%, 100%
Enlargement Ratios	121%, 129%, 155%, 200%, 400%
Zoom	25% to 400% in 1% increments
Standard Features	Auto Magnification, Auto Paper Select, Auto Tray Switch, Background Numbering, Booklet/Magazine Copy, Center/Border Erase, Chapters, Combine Mode, Cover Insertion, Date Stamp, Directional Magnification, Document Server (3,000 file capacity), Duplex, Electronic/Rotate Sorting, Full- Color VGA Touch Screen Control Panel, Negative/Positive, OHP Slip Sheet, Page Number Stamp, Pre-Set Stamps, 10 Job Programs, 500 User Codes, 8 Job Presets, Sample Copy, Series Copy, User Stamps

PRINTER SPECIFICATIONS (STANDARD)

Print Speed	9228: 28 ppm (LTR) 9233: 33 ppm (LTR)
CPU	RM7035C 533 MHz
Standard Interfaces	10Base-T/100BaseTX Ethernet, USB 2.0
Optional Interfaces	IEEE 802.11a/b/g Wireless LAN, Bluetooth, IEEE 1284 Parallel, Gigabit Ethernet
Memory Capacity	Shared with Copier
Network Protocol	TCP/IP, IPX/SPX, AppleTalk
Network Operating Systems	Windows Vista/2000/XP/Server 2003/Server 2008, Netware 3.12, 3.2, 4.1, 4.11, 5.0, 5.1, 6.0, 6.5, Unix; Sun Solaris, HP-UX, SCO OpenServer, Red Hat Linux, IBM AIX, Mac OS 8.6 - 9.2x, OS X 10.1 or later, SAP R/3, NDPS Gateway, IBM iSeries/AS/400® using OS/400 Host Print Transform, Citrix Metaframe

Utilities	SmartDeviceMonitor, Web SmartDeviceMonitor, Web Image Monitor
Page Description Languages	PCL5e/6 (standard), Adobe PostScript 3 (optional)
Print Resolution	Up to 600 dpi
Grayscale	256 levels
Fonts for PCL5e/6	35 Intellifonts, 10 TrueType and 13 International Fonts
Fonts for PS3	136 PostScript Fonts
Standard Features	Sample/Locked/Hold/Stored Print

SCANNER SPECIFICATIONS (STANDARD)

Scanning Speed	Embedded Scanning: 50/29 ipm B&W/Color (@ 200 dpi)
Scanning Resolution	600 dpi
Grayscale	256 levels
Scan Area	Up to 11" x 17"
Standard Interfaces	10Base-T/100BaseTX Ethernet IEEE 802.11a/b/g Wireless LAN, Gigabit Ethernet
Optional Interfaces	TCP/IP, NCP, SMB, SMTP, POP 3, LDAP, FTP
Protocol	Shared with Copier
Memory Capacity	Single and Multi-Page TIFF/PDF, High Compression PDF, Single-Page JPEG
File Types	Embedded Scan-to-Email/HDD/ Folder/ URL and TWAIN, Color Scan
Standard Features	Embedded Scan-to-Email/HDD/ Folder/ URL and TWAIN, Color Scan

FAX SPECIFICATIONS (OPTION)

Circuit	PSTN, PBX
Compatibility	ITU-T G3
Resolution	200 x 200/100 dpi 400 x 400 dpi (optional)
Compression Method	MH, MR, MMR, JBIG
Scanning Speed	0.40 seconds (LEF)
Modem Speed	33.6 Kbps with Auto Fallback
Transmission Speed	G3: 3 seconds per page (MMR Compression) G3: 2 seconds per page (JBIG Compression)
Memory	4 MB standard/28 MB maximum 320 pages/2,240 pages
Std/Max Auto Dials	2,000
Group Dials	100 (max. 500 numbers per group)
ID Code Programming	4 digits
User Function Key	3 keys
Standard Features	Book Transmission, Dual Access, Duplex Reception, Image Rotation, 1 Hour Backup, LAN-Fax Capability, Internet Faxing (T.37), IP Faxing (T.38), Fax Forwarding to E- Mail/HDD/Folder
Optional Features	Simultaneous Operation of up to 3 lines (G3 x 3)

SECURITY FEATURES (STANDARD)

S/MIME, IPsec Communication, Locked Print Password
Encryption, Encrypt Address Book, SSL, User Authentication,
SNMP v3 and PDF encryption

PB3030 PAPER BANK UNIT (OPTION)

Paper Size	5.5" x 8.5" to 11" x 17" A5 to A3
Paper Weight	16 to 28 lb. Bond/60 to 105g/m ²
Paper Capacity	2 x 500 sheets
Dimensions	21.7"(W) x 20.5"(D) x 10.7"(H)

PS500 LARGE CAPACITY TRAY (OPTION)

Paper Size	8.5" x 11"/A4
Paper Weight	16 to 28 lb. Bond/60 to 105g/m ²
Paper Capacity	2,000 sheets x 1
Dimensions	21.7"(W) x 20.5"(D) x 10.7"(H)

ONE-BIN TRAY BN3030 (OPTION)

Paper Size	5.5" x 8.5" to 11" x 17"/A5 to A3
Paper Weight	16 to 28 lb. Bond/60 to 105g/m ²
Paper Capacity	125 sheets

SR3050 500-SHEET FINISHER (OPTION)

Paper Size	5.5" x 8.5" to 11" x 17"/A6 to A3
Paper Weight	14 to 42 lb. Bond/52 to 157g/m ²
Stack Capacity	Shift Tray: 500 sheets (8.5" x 11" or smaller) 250 sheets (8.5" x 14" or larger)
Staple Capacity	50 sheets (8.5" x 11") 30 sheets (8.5" x 14" or larger)
Staple Position	1 staple/4 positions; 2 staples/1 position
Dimensions	15.6"(W) x 21.7"(D) x 10.9"(H)

SR790 1,000-SHEET FINISHER (OPTION)

Paper Size	5.5" x 8.5" to 11" x 17"/A6 to A3
Paper Weight	14 to 42 lb. Bond/52 to 157g/m ²
Stack Capacity	Proof Tray: 250 sheets (8.5" x 11" or smaller) 50 sheets (8.5" x 14" or larger) Shift Tray: 1,000 sheets (8.5" x 11" or smaller) 500 sheets (8.5" x 14" or larger)
Staple Capacity	50 sheets (8.5" x 11") 30 sheets (8.5" x 14" or larger)
Staple Position	1 staple/2 positions; 2 staples/1 position
Dimensions	10.7"(W) x 20.5"(D) x 31.2"(H)

SR3000 BOOKLET FINISHER (OPTION)

Paper Size	5.5" x 8.5" to 11" x 17"/A6 to A3
Paper Weight	14 to 28 lb. Bond/52 to 105g/m ² (Proof Tray); 14 to 68 lb. Bond/ 52 to 256g/m ² (Shift Tray)
Stack Capacity	Proof Tray: 100 sheets (8.5" x 11" or smaller) 50 sheets (8.5" x 14" or larger) Shift Tray: 1,000 sheets (8.5" x 11" or smaller) 500 sheets (8.5" x 14" or larger)
Staple Capacity	500 sheets (8.5" x 14" or larger) 50 sheets (8.5" x 11") 30 sheets (8.5" x 14" or larger)
Staple Position	1 staple/2 positions; 2 staples/1 position
Dimensions	21.1"(W) x 23.7"(D) x 36.7"(H)
Punch Unit (Option)	2 or 3 hole punch

ARDF DF3030 (OPTION)

Paper Size	5.5" x 8.5" to 11" x 17"
Paper Weight	11 to 34 lb. Bond/40 to 128g/m ²
Stack Capacity	50 sheets
Dimensions	21.7"(W) x 19.3"(D) x 4.7"(H)

ADDITIONAL OPTIONS

Platen Cover Type 3800C, FAC38 Cabinet, Fax Type 3351,
G3 Interface Type 3350, 32 MB Fax Memory Unit Type B,
Handset Type 1018, IEEE 1284 Parallel Interface Board Type
A, IEEE 802.11a/b/g Wireless Interface Unit Type J, Adobe
PostScript 3 Type 3350, Bridge Unit Type BU3020, Internal
Shift Sort Tray Type SH3010, Key Counter Bracket Type H, File
Format Converter Type E, DataOverwriteSecurity Unit Type I,
Bluetooth Interface Unit Type 3245, Punch Kit PU3000,
Optional Counter Interface Unit Type A, 3L68-19 USB External
Keyboard, HDD Encryption Type A, Hardware 4 Pack Bundle of
PPDM, Gigabit Ethernet Board Type A

Note: Some accessories require additional equipment or may
be prerequisites for other options.

www.savin.com

Bringing Savin Value to Your Organization

Savin technology offers a diverse portfolio of solutions to help your organization stay competitive and move ahead. Let Savin show you how to empower your business to improve critical processes, keep information secure, ensure compliance and promote environmental sustainability while reducing the total cost of ownership.

Savin Five Dedrick Place, West Caldwell, NJ 07006

Savin® is a registered trademark of Ricoh Americas Corporation. All other trademarks are the property of their respective owners. Print speed may be affected by network, application or PC performance. Specifications and external appearances are subject to change without notice. Products are shown with optional features.

