



# KIP 770

## SPECIFICATIONS



Single Footprint - KIP 770 Multifunction System

### System Configurations

1 Roll Copy/Print System	B&W wide format copier/printer
1 Roll B&w Print/Copy/STF with Color STF	B&W wide format printer with B&W Copy & Scan and Color Scan
Paper Tray (optional)	50 sheet capacity up to 24" x 18" / A2-A4

### General

Description	B/W wide format print/copy/scan with b/w / color scanner
Type	Electrophotography(LED) with organic photoconductor (OPC) and closed toner system
Speed	3 D size pages per minute, FPOT (First Print Output Time) 41 seconds for one D size page
Warm Up Time	<2.5 minutes from sleep
Configurations	Multifunction system (print/copy/scan) 1 Roll / Manual Sheet Bypass (Standard)
Options	Paper Tray 50 Sheet capacity up to 24" x 18" / A2 to A4
Electrical Requirements	120V, 50/60Hz 15A
Power Consumption	Sleep <13 W Printing - 1.5Kw - Including Scanner & Controller
Dimensions	57" x 33" x 52" / 1450mm x 833mm x 1330mm
Weight	390lbs / 177kg with stand

### Printer

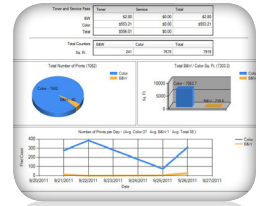
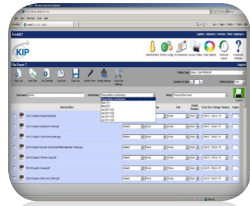
Print Resolution	600 x 1800 dpi
Paper Capacity	1500 sqft / 139 sq.m Roll media, 60 sqft / 5.5 sq.m sheet media
Output Sizes Width	11" to 36" / 210mm to 914mm
Output Sizes Length	6.5ft / 2400mm Standard - 12ft / 3600mm option (technician configured)
Paper Weight	Bond 18-32lb, Vellum, Translucent Bond 18-20lb, Film 3.5-4 mil
Media Type	Bond, Vellum, Translucent Bond, Film (compatible with recycled & colored bond)

### Controller

Controller Type	KIP KS8 with Windows 7 Embedded
Memory	2GB DDR3 Standard - Upgradable to 4 GB
Hard Drive	160 GB minimum Unlimited Upgrade
File Formats	DWF, PDF, HPGL 1/2, HP-RTL, Calcomp, 906/907, CALS Group 4, TIFF Group 4, CIT/TG4, VCGL, Uncompressed, Grayscale TIFF, TIFF Packbits, IOCA, EDMICS, TLC (KIP), PNG, JPEG

### KIP 770 Scanner

Scanner Type	Fully Intergrated CIS with KIP RTT Technology
Scan Resolution	600 x 600 dpi optical resolution
Scan Speed	Up to 38.5 ft per minute / 195mm per sec (B/W) Up to 13 ft per minute / 66mm per sec (Color)
Scan Format	TIFF, Multipage TIFF, PDF, PDF-A, Multipage PDF, DWF, Multipage DWF, JPEG, CALS
Scan Destination	Local USB (Removable Media), Unlimited KS8 Mailboxes (Local), Unlimited FTP, Unlimited SMB, Unlimited Cloud - Google Drive/Dropbox/Box/OneDrive/Sharepoint
Original Size Width	11" to 36" / 210mm to 914mm
Original Thickness	Up to 1.6mm thick



## KIP Print Management Software

KIP Touchscreen	Integrated Cloud Connections	Full integration with OneDrive, Google Drive or Dropbox, Box.com, Microsoft Sharepoint & Microsoft Office 365 Online™
	Concurrent Print & Scan to File	Scan images to file while printing, select number of copies, select output media
	File to Print	Fully cloud connected. Scan mailboxes, print from removable media, print from network locations, view images prior to printing, apply folding preferences, save/recall print jobs
	Copying & Scanning	Fully cloud connected. Collated sets copying, recall, edit & reprint previous jobs, set copy & concurrent print, apply digital stamps, scan directly to multi-page PDF, DWF or TIF, Apply folding preferences to copies, scan to USB removable media drives
	System Management	Print queue control, keycode management, inkjet configuration, illustrated operator guides, system guides, service mode access, system preset access
KIP Printing Applications	KIP Print	KIP Print network printing software is an easy to use application designed to provide operators with a fast and accurate means of producing high quality print sets. An intuitive ribbon style interface with an emphasis on job building; featuring column browsing, color thumbnail previews and total preflight control.
	KIP Cloud Printing	The ability to produce wide format prints using nothing more than an email with attachments and a few key words helps keep mobile clients on the go to stay productive.
	KIP PrintNet Web Printing	Web-based printing utility which facilitates management of the print queue, configuration of files for printing from Windows, UNIX and Mac based internet browser applications
	KIP Windows/Autocad Drivers	Windows driver supports 32 or 64 bit printing, set collation, job accounting, media selection & folding features. AutoCAD driver enables printing directly from AutoCAD applications with advanced vector/raster print data control.
	KIP Touchscreen Printing	KIP Touchscreen eliminates the need for additional PC hardware by printing documents from removable media such as standard USB drives & network drives.
KIP Cost Review Application	Cost Review Application and KIP Track System	KIP Cost Review Application reports can be delivered via email or printed on demand to provide information related to toner coverage, media use and recent job details. When activated, the KIP Track system requires operators to log in before operating.
KIP Color Plus	Color Scanning	Scan directly to PDF, JPG and TIFF, automatic quality presets, scan directly to USB and removable media, scan DPI from 200-600, scan to FTP, hard drive, user mailbox, email, scan preview, auto size detection, auto image color, original and copy presets, unlimited scan presets, lead and trail edge adjustments.
	Color Copying (optional)	Copy directly to wide range of inkjet printers, multiple copy count, reduction enlargement, rotate, mirror, invert, zoom, area of interest, scale to fit, auto image color, original and copy presets, unlimited copy presets, lead and trail edge adjustments, closed loop calibration, copy preview.
	Color Printing (optional)	Print single or multiple (sets) images directly to wide range of inkjet printers, multiple print count, reduction enlargement, rotate, mirror, zoom, invert, multi-touch preview, area of interest, scale to fit, ICC profile support, auto image color, lead and trail edge adjustments, print preview.

## Software Options

PDF Printing Keycode	Includes support for Postscript levels 1,2 & 3, PDF 1.7
Accessory Kits	Secure Hard Drive Kit