



Xerox® Color 550/560 Printer
Productivity plus outstanding color
for all environments.

Productivity, scalability and professional image quality, all-in-one.

The Xerox® Color 550/560 Printer integrates benchmark image quality, expansive media handling and professional finishing with efficient, secure and flexible color workflows to deliver an affordable print solution for any environment.



Gain new business and keep high-value color printing in-house.

- Benchmark 2400 x 2400 dpi image quality with excellent color consistency.
- Emulsion Aggregation (EA) Low Melt Toner gives all your applications a smooth, offset-like finish with outstanding sharpness and uniformity, crisp text and bright highlights.
- Enhanced Gloss Mode setting produces output with a glossy luster.
- Digital speed, easy set-up and automated workflows accomplish the quick turnarounds and cost-effective short runs customers expect.
- Meets Fogra certification standards.

Flexibility to create a wider range of applications.

- Expansive media range lets you print everything from postcards to posters.
- Handles both coated and uncoated stock, up to 300 gsm.
- Inline finishing options offer a professional polish with stapling, hole-punching and folding for presentations, brochures, reports and newsletters.
- Xerox® Integrated Color Server and four other server options.
- Choice of print servers allows you to boost color management and streamline labor-intensive processes.
- Variable data capabilities let you capitalize on personalized applications for direct mail.

Get productivity from start to finish.

- Four standard internal paper trays plus additional feeding options optimize the number of sheets in your print run.
- Swift printing of 50/55 ppm and 60/65 ppm, color and black/white.
- Load-while-run paper and toner.
- An array of Customer Replaceable Units puts you in control of basic maintenance.
- Smart eSolutions MeterAssistant® and SuppliesAssistant® collect and analyze information that is sent to Xerox support for easy, accurate billing, supplies replenishment and fault code analysis.

Streamline processes, save time and simplify device management.

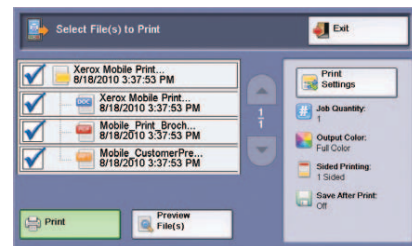
- Scan, print, copy, fax and route files, all at once. Concurrent operation maximizes productivity, letting multiple users perform different tasks simultaneously.
- **Never wait for a critical print job.** The Print Around feature holds a job in need of resources (such as special paper size) and prints the next job in the queue.
- **Program finished documents right from your desktop.** Bi-directional print drivers make many capabilities that are available to walk-up users available at the desktop as well.
- **Enhanced productivity with bi-directional communication.** Users can see from their PC if a large job is in the print queue or when supplies are running low.
- **Superior scanning.** Create text-searchable files at the device for easy retrieval—compression technology reduces network load for fast transmission.
- **Automate common workflows.** Create job flow sheets to automatically route documents to predefined locations, including email, fax destinations and FTP/SMB sites.
- **Remotely manage your device.** CentreWare® IS Embedded Web Server automates installation, troubleshooting feature set-up and upgrading.

Manage costs and save money.

- Customize print driver settings for economy and efficiency. Set two-sided printing, choose N-up for printing multiple pages on a single sheet as your default or adjust settings for specific applications.
- Manage and track device usage with the internal Auditron, that sets limits on a device's features for analysis and billing purposes. Xerox® Standard Accounting provides reports for greater cost control.

Implement enterprise security solutions without skilled IT know-how to safeguard your critical information with:

- Secure Print that keeps documents private by holding print jobs in the queue until the user enters the password.
- Password protected PDFs that require a password to open and view a sensitive scan.
- Data Security that keeps information safe by encrypting resident data on the device and electronically erases images on the hard device.
- Full system Common Criteria (ISO 15408) Certification at EAL3 that ensures the Xerox® Color 550/560 Printer conforms to the most stringent security standards and regulations.



Xerox® Mobile Print Solution

Xerox makes mobile printing simpler and more convenient, while keeping your business secure. We empower today's mobile professionals with the freedom to send print jobs from any email-enabled device.

Simple. Xerox® Mobile Print Solution works with any email-enabled mobile device. There's no software to load, no searching for online printer information, no time wasted looking for the right application. Plus, there's no dependence on administrative support staff for printing tasks.

Convenient. Wherever they're working, users will be able to print MS Office documents, including MS Word, Excel® and PowerPoint®, as well as PDFs.

Secure. Print directly from mobile devices and retrieve documents at a Xerox®-enabled MFP with a secure confirmation code. Mobile professionals will no longer have to rely on others to print sensitive documents or risk leaving prints in the output tray.

The Xerox® Color 550/560 is easy on the environment.

- "Earth Smart" options at your print driver let you save paper (for example, by limiting banner pages or printing two-up) and save other resources, such as setting your default to print in draft mode.
- EA Low Melt Toner delivers high print quality at a lower melting point, saving energy, and achieves better distribution of smaller particles for higher quality with less toner per page.
- Scan Preview lets you see how your results will look before printing or sending, saving paper and energy.
- Paperless faxing with LAN fax sends faxes directly from applications on your desktop. And incoming faxes can be viewed as thumbnail images on the user interface, so you print only what's important.

Productivity— simpler, smarter.

When work gets done more simply, people get more productive. The Xerox® Color 550/560 Printer simplifies the process of capturing, editing, managing and storing documents. Xerox® workflow solutions are the simplest way to connect people to the information and tools they need to get quality work done faster, more efficiently and effectively.

Productive, versatile workflow solutions are at your fingertips. With the easy-to-use interface you can:

- Turn paper into digital information and deliver it to your desktop in your preferred format
- Keep intellectual property organized and secure with automated routing and delivery
- Manage device access and control costs
- Track and account for input loads and activity



Optional solutions include:

Xerox® Scan to PC Desktop®

Scan to PC Desktop software bridges the gap between Microsoft Office documents, PDFs and paper. It allows you to customize the scanning menus on your Xerox® Color 550/560 directly from your desktop for personalized document capture and desktop document management.

Xerox Secure Access Unified ID System®

Secure Access integrates with your existing employee ID badge solution, allowing users to unlock access to system features via badge proximity or swiping. Data can then be made available for tracking, accounting and regulatory purposes. Follow-You™ print allows you to send a document to a secure print queue and use your ID card to access the document for printing on any network printer equipped with Secure Access.

Equitrac Office®

Equitrac Office provides a secure, convenient, mobile print workflow while controlling costs and simplifying administration. It enables single sign-on access to devices and services, personal print queues to maximize document security and mobility, and rules to create cost-effective printer usage. With just a few touches on the UI, you get greater control over document costs, accountability and an audit trail for your most important information.

Whatever the size and scope of your work, we'll fit your needs.

Feeding Options: Add on as your productivity and media handling needs increase.

High Capacity Feeder—2,000 sheets
8.5" x 11"/A4 up to 80 lb cover/
220 gsm coated

- Envelope and small media feeder
- Great for long run reports, presentations, mailers, etc.

One- or up to Two-Tray Oversized High Capacity Feeders (OHCF)—2,000–4,000 sheets 13" x 19.2"/330 x 488 mm each tray, up to 110 lb cover/300 gsm coated. Paper stabilizer minimizes skew; roller system prevents misfeeds

- Reliable feeding for large quantities of coated paper and enables 12" x 18"/SRA3 full bleed applications

Finishing Options: Scale up your inline finishing capabilities as your demands grow.

Offset Catch Tray—500 sheet stacking

Advanced Finisher—Multiposition 50 sheet stapling and standard 2/3 or 2/4 hole punching for coated/uncoated paper

- Ideal for binders, manuals, reports and presentations

Professional Finisher—Multiposition coated/uncoated 50 sheet stapling and standard 2/3 or 2/4 hole punching plus bi-folding and saddle-stitch booklet making

Standard Finisher—Multiposition stapling and hole punch of coated and uncoated paper, up to 100 sheets, standard 200 sheet Interposer and optional folding module for advanced tri-fold, Z-fold, and 11" x 17"/A3 Z-fold applications

Booklet Maker Finisher—Offers all the features of the Standard Finisher plus:

- Saddle-stitch and bi-fold capabilities for coated paper
- Ideal for large booklets and calendars, up to 25 sheets (100 imposed pages)

The SquareFold® Trimmer Module—Enhances the power of your finisher with highly desired features, such as square folding and face trimming to produce high value brochures and booklets

The new GBC AdvancedPunch™—Lets you create professionally bound documents in-house by combining printing, collating and punching into one convenient step. You can select from various interchangeable die sets for popular binding styles without manual punching, thereby increasing productivity and lowering costs while producing professional looking documents

Productivity and security are built into your Xerox® Color 550/560 Printer.

User Interface features 10.4"/264 mm color touch screen

Copy at 50 color, 60 black and white copies per minute, even duplex

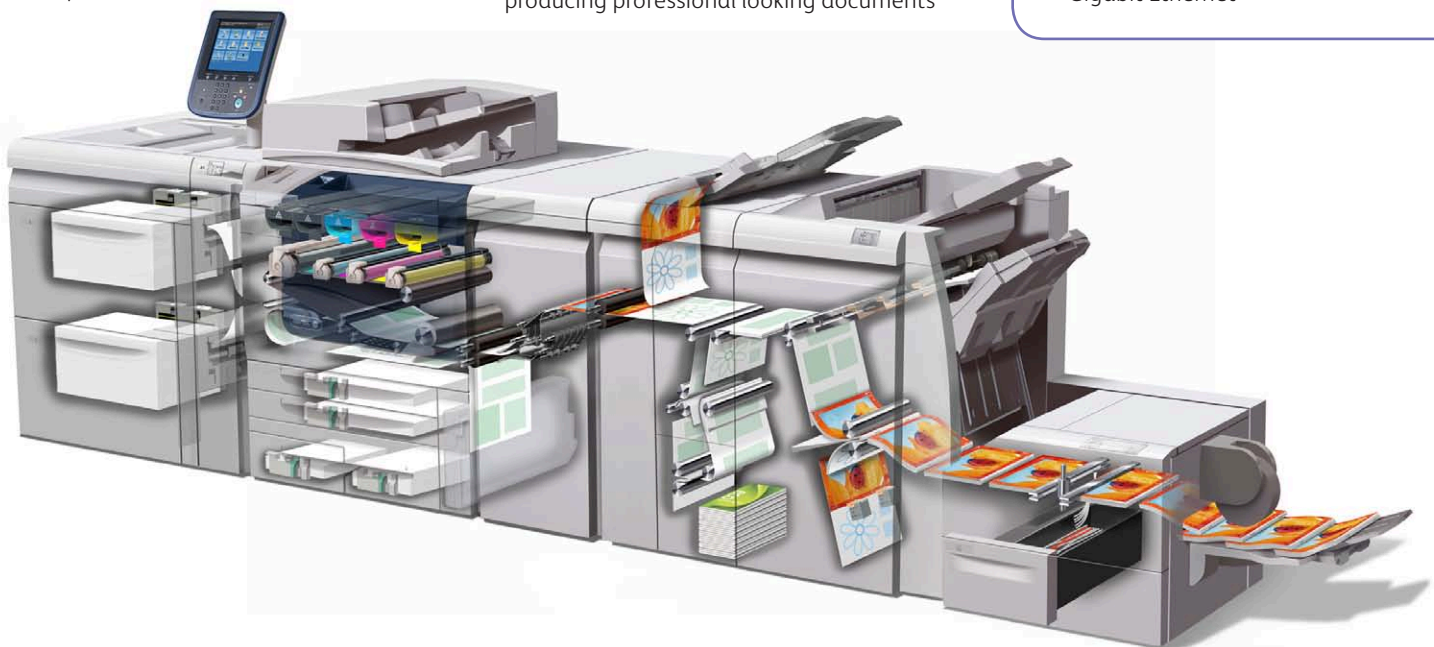
Fax via G3 or IP Fax (SIP)

Scan at high speed, both color and monochrome, with data converted to several formats—that can be password protected—and sent using a variety of methods, including saved to PC, server USB media or sent as an email attachment

Be Secure with integrated security features such as IP filtering, image overwrite, secure print, encrypted scan-to-email, authentication and IPv6 support, etc.

Plus, choose additional options such as:

- Xerox® SmartSend®
- Xerox® Secure Access
- Secure Watermark
- Gigabit Ethernet

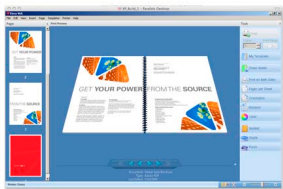


Server options to meet every need.

The Xerox® Color 550/560 Printer offers a range of servers to fit your environment depending on your workflow, applications and preferences.

Accelerate your business with industry-leading print server options that bring unmatched flexibility and benchmark performance, color management, imposition, variable printing and much more!

The Xerox® Integrated Color Server brings benchmark efficiency to your scanning, printing and office communications. The server includes a broad array of multifunction capabilities. Efficiently scan, copy, fax, print and more, bringing new levels of productivity to office communications.



Xerox® Integrated Fiery® Color Server

Get fast RIP speeds and great productivity while simplifying and streamlining your workflow by automating job submissions of repetitive job types with optional Hot Folders and Virtual Printers. Fiery ColorWise color management tools produce precise, exact color. And its basic variable data capabilities let you customize output with varying text, photos and graphics.

EX Print Server, Powered by Fiery®

You can produce effective marketing pieces with a wide range of output options, including automatic identification of job elements, eliminating the need to reprogram jobs. Fiery ColorWise delivers high-quality color fast and easy. Fiery Command Workstation reduces errors and waste. Supports Adobe PDF Print Engine, for a native, end-to-end PDF workflow.

CX Print Server, Powered by Creo® Color Server Technology

Advanced features and ease of use deliver excellent color capability and quality expanding your range of services and business opportunities. Creo Color Server allows automated workflow for quick, error-free results. Its superb color output and management ensure customer-pleasing results. Built-in connectivity to Prinergy workflow and Adobe PDF Print Engine for a native, end-to-end PDF workflow.

Xerox® FreeFlow® Print Server

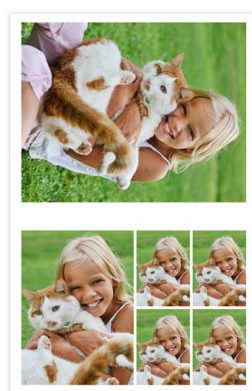
Delivering simple yet advanced color management with Xerox® ConfidentColor technology, the FreeFlow Print Server enables you to deliver high-quality documents. It combines great features such as Xerox® Consistent Color Mode with advanced profiling technology, Adobe PDF Print Engine, as well as production features and the FreeFlow Print Server to give you everything you need for outstanding color output.

Create exciting new applications— easily finished inline.

The printing world is exploding with new applications and new ways to use color, media and finishing. The superb image quality, robust media latitude, flexible finishing options, modularity and server options of the Xerox® Color 550/560 Printer, integrated with enterprise workflows, make it the perfect device for capturing new business, keeping more applications in-house.

Production printing with enterprise workflows at an affordable price.

Image quality, ease of use, productivity, media latitude, feeding and finishing options, plus world-class workflow solutions are at your fingertips. Grow your digital color printing capabilities and reduce costs with the Xerox® Color 550/560 Printer.



- **Brochures**—easily create professional, colorful brochures with productivity-boosting inline folding and square fold trimming
- **Presentations/Newsletters**—inline stapling and hole punching makes producing presentations and newsletters quick and easy
- **Reports**—inserted tabs keep annual reports and financial reports organized, while stapling and GBC AdvancedPunch hole-punching keep pages secure
- **Posters**—expanded media range lets you run eye-catching posters on sturdy coated media—up to 12" x 18"/SRA3
- **Booklets**—automated folding and coated paper saddle stitching—even inserts—give booklets such as retail catalogs and photo books a professional finish that's fast too
- **Specialty Media and Photo Specialty applications**—impeccable color and photo-finish image quality will keep customers coming to you for all today's latest photo applications

Specifications for the Xerox® Color 550/560 Printer

Resolution

- Print/Copy: 2400 x 2400 dpi
Scan: 200 x 200, 300 x 300, 400 x 400, 600 x 600
- Line Screens: 600, 300, 200 and 150 Clustered Dot, 200 Rotated Line Screen*

Technology

- Load-while-run toner and paper capability
- Advanced Registration Technology for tighter control, ±1.2 mm along lead edge, ±2.4 mm side to side
- Custom paper set-up/alignment profiles
- Xerox® EA low melt toner
- SMart Kit® replaceable units for toners, drums, fuser, charge corotron, waste bottle, staples

Integrated Scanner

- 250 sheet capacity
- 50 ppm color/65 ppm b/w in copy mode; 50 ppm color/80 ppm b/w in network scanning mode
- Originals up to 11" x 17"/A3 in weights from 38 – 105 gsm (16 – 28 lb bond)
- Duplex Automatic Document Feeder (DADF)

Productivity/Print Speeds

- Duty Cycle: 300,000

Xerox® Color 550/560 Color

- 8.5" x 11"/A4
 - 50/60 ppm (64 – 105 gsm) uncoated
 - 35/43 ppm (106 – 176 gsm) uncoated, (106 – 150 gsm) coated
 - 25/30 ppm (177 – 300 gsm) uncoated, (151 – 300 gsm) coated
- 11" x 17"/A3
 - 25/30 ppm (64 – 105 gsm) uncoated
 - 19/21 ppm (106 – 176 gsm) uncoated, (106 – 150 gsm) coated
 - 14/14 ppm (177 – 300 gsm) uncoated, (151 – 300 gsm) coated
- 12" x 18"/SRA3
 - 22/27 ppm (64 – 105 gsm) uncoated
 - 15/19 ppm (106 – 176 gsm) uncoated, (106 – 150 gsm) coated
 - 12/12 ppm (177 – 300 gsm) uncoated, (151 – 300 gsm) coated

Xerox® Color 550/560 Black and White

- 8.5" x 11"/A4
 - 55/65 ppm (64 – 176 gsm) uncoated
 - 35/43 ppm (177 – 300 gsm) uncoated, (106 – 176 gsm) coated
 - 25/30 ppm (177 – 300 gsm) coated
- 11" x 17"/A3
 - 27/33 ppm (64 – 176 gsm) uncoated
 - 19/21 ppm (177 – 300 gsm) uncoated, (106 – 176 gsm) coated
 - 14/14 ppm (177 – 300 gsm) coated
- 12" x 18"/SRA3
 - 25/29 ppm (64 – 176 gsm) uncoated
 - 15/19 ppm (177 – 300 gsm) uncoated, (106 – 176 gsm) coated
 - 12/12 ppm (177 – 300 gsm) coated

Paper

Flexibility/Weights

- Internal Trays 64-220 gsm uncoated and coated
 - Tray 1: 500 sheet 12" x 18"/SRA3
 - Tray 2: 500 sheet 11" x 17"/A3
 - Tray 3: 870 sheet 8.5" x 11"/A4
 - Tray 4: 1140 sheet 8.5" x 11"/A4

- Bypass 250-sheet up to 110 lb cover (300 gsm) uncoated and coated
- Optional 2,000 sheet A4 HCF
- Optional 2,000 sheet OHCF (1- or 2-tray)

Capacity and Handling (8.5" x 11"/A4)

- 3,260 sheets standard via four internal trays and bypass tray
- Maximum paper capacity: 7,260 sheets via standard trays and two Oversized High Capacity Feeders (optional)
- Two-sided printing:
 - 65 lb cover/176 gsm auto duplex for all stocks
 - 80 lb/220 gsm auto duplex for most stocks
 - 110 lb cover/300 gsm manual duplex for all stocks from bypass trays and optional Oversized High Capacity Feeder

Feeding and Finishing Options

High-Capacity Feeder (HCF)

- 8.5" x 11"/A4
- 2,000 sheets up to 80 lb cover (220 gsm)

Oversized High-Capacity Feeder (OHCF)

- 18 lb bond – 110 lb cover/64 – 300 gsm uncoated
- 28 lb bond – 110 lb cover/106 – 300 gsm coated
- 7.2" x 10"/182 x 250 mm – B5 to 13" x 19.2"/SRA3/330 x 488 mm
- 65 lb cover/176 gsm auto duplex for all stocks
- 80 lb/220 gsm auto duplex for most stocks (Letter/A4, Tabloid/A3)
- 110 lb cover/300 gsm simplex and manual duplex for all stocks
- One or two tray module: 2,000 sheets/4,000 sheets
- Small Media support included with 2-OHCF
- Envelope and small media feeder

Offset Catch Tray

- 500 sheet stacking

Advanced Finisher

- 500 sheet top tray, 3,000 sheet stacker tray
- Multi-position stapling, coated and uncoated paper, up to 50 sheets, hole punching

Professional Finisher

- 500 sheet top tray, 1,500 sheet stacker tray
- Stapling, coated and uncoated, up to 50 sheets, hole punching
- Bi-fold, saddle stitch booklet maker up to 15 uncoated sheets, 7 sheets at 106 – 176 gsm coated, 5 sheets at 177 – 220 gsm coated

Standard Finisher

- 500 sheet top tray, 3,000 sheet stacker tray
- Multi-position hole punching and stapling, quad/4 staples
- Stapling, coated and uncoated, up to 100 sheets
- 200 sheet interposer for pre-printed and full bleed sheets
- Built-in decurling for coated/heavy-weight media through Interface Module required to connect to printer

Booklet Maker Finisher – all features of

Standard Finisher plus:

- Coated/uncoated bi-fold or saddle-stitch coated/uncoated booklet up to 25 sheets (100 imposed pages of 24 lb/90 gsm media)
- Optional Folding Module for tri-fold and Z-fold (A4/letter and A3/tabloid)

GBC AdvancedPunch™

- Punch configurations available in A4 and 8.5 x 11 in.
- Various interchangeable die sets included

SquareFold® Trimmer Module

- Square fold up to 25 sheets
- Face trim between 2 – 20 mm in 0.1 mm increments
- Paper weights 18 lb. Bond to 110 lb Cover (64 gsm – 300 gsm) coated and uncoated

Convenience Stapler

- Staple up to 50 sheets of 24 lb/90 gsm media

Selected Color/Graphic Arts Credentials

- Fogra certification, PANTONE Matching System, PANTONE GOE, PANTONE Plus, Adobe PDF Print Engine*

Xerox® Integrated Color Server

Hardware Specifications (equal or better)

- 80 GB Hard Disk Drive, 2 GB RAM
- 10.4" color, touch screen flat-panel display
- Ethernet interface (10 MBTX/sec, 100 MBTX/sec, 1000 MBTX/sec option)

Client Environments Supported

- Windows XP SP1 & above (32 & 64 bit), Server 2003/2008 (32 & 64 bit), Vista (32 & 64 bit), Windows 7 (32 & 64 bit), Mac OS 10.4 and above, Citrix, Custom driver for Unix: AIX 5 v5.3, HP UX 11.0/11i v2, Solaris 8/9/10, Linux Fedora Core 1/5, Red Hat ES4, SUSE 10/11
- Citrix, WHQL certification*

PDLs and Data Formats

- PDF, XPS®, PCL® 6 emulation, HP-GL2 (direct submission), Adobe® PostScript® 3™ option, TIFF, JPEG

Scan

- Scan to Email, Scan to Folder, to PC, to Mailbox (private and public), options include Scan to USB, FTP, SMB, Desk, Text searchable PDF, PDF/A, XPS, Thumbnail Preview

Security

- Standard Secure Print, Authentication with LDAP/Kerberos/SMB/CAC, Password Protected PDF, FIPS 140-2 encryption, S/MIME Encrypted Email, IPSec, 802.1x, SNMP v3.0, Email over SSL, Image Overwrite (Immediate, Scheduled, On Demand) Hard Disk Data Encryption, Audit Log Optional CAC, Secure Access Unified ID System®
- IPv6 Ready
- 256 Bit Encryption
- Common Criteria Certified

Other Options

- USB, Media Card Reader, Common Access Card Enablement Kit, Accounting Options, Extensible Interface Platform Enabled (EIP), Foreign Device Interface
- Mobile / Smartphone Print

Additional Print Server Options

Xerox® Integrated Fiery® Color Server

FreeFlow® Print Server

CX Print Server, Powered by Creo® Color

Server Technology

EX Print Server, Powered by Fiery®

Electrical Requirements

- Printer: 110 – 127 VAC/50/60 Hz
- Options: 100 – 240 VAC 50/60 Hz
- Optional Feeding/Finishing:
 - Each module requires 100 – 240 VAC, 50/60 Hz power

Printer Dimensions

- Height: 54.8"/1,391.5 mm
- Width: 62"/1,574 mm
- Depth: 31"/787 mm

*Depending on Print Server / Controller Selected

Contact your Xerox representative for details to find out more about adding a bit of color to your business.

©2012 Xerox Corporation. All Rights Reserved. XEROX®, XEROX and Design®, CentreWare®, FreeFlow®, MeterAssistant®, Scan to PC Desktop®, SMart Kit®, SMARTsend®, SquareFold®, SuppliesAssistant®, Xerox Secure Access Unified ID System® and are trademarks of Xerox Corporation in the United States and/or other countries. EFI™, Splash, Fiery® and RPX-iii™ are trademarks of Electronics for Imaging, Inc. Product appearance, build status and/or specifications are subject to change without notice. 04/12 X56BR-01UD

