



Integrated Document Workflow with Cloud and Email Connect Features!



Connect



Scan



Print



IT ADMIN

We moved to cloud services including Microsoft Office365® and Box™. Looking for an easy way to move old document workflows to new.

We could implement document scan to Microsoft Office365 and Box without a complex system. Sharp MFPs offer built-in features to connect popular cloud storage and email services!



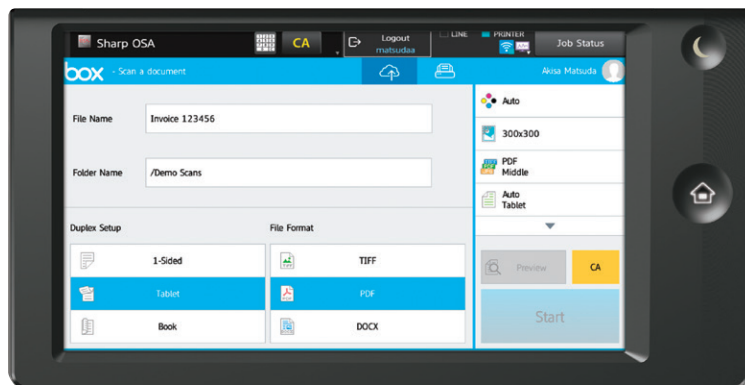
END CUSTOMERS

My organization adopted a cloud document storage service and I want to minimize disruption and changes to existing processes that involve paper documents.

Our new Sharp MFP is easy to use with minimum learning required! Simply login and scan documents to my cloud folders!

ULTIMATE SCAN & PRINT EXPERIENCE WITH SHARP MFP'S CLOUD AND EMAIL CONNECT FEATURES

Through the cloud/email connect feature on Sharp's new generation of multifunction products, organizations can seamlessly integrate their paper-based documents workflows with popular cloud services. For optimal user experience, single-sign-on is supported. Users can login once and conveniently scan documents or access cloud-stored documents directly from the Sharp MFP while IT administrators maintains full security control.



Intuitive scanning and printing experience

Security and Convenience with Email connect feature

- Scan and send emails from logged in users
- Access to your contact list (Global and Personal)
- Sent history in Outlook® or Gmail clients
- Applies Exchange server rules and security (e.g. size limit, destination restrictions)

Cloud Connect For:

- OneDrive® for Business
- SharePoint Online®
- Google Drive™
- Box Connector (The application is available through authorized Sharp dealers)

Email Connect For:

- Exchange Server
- Exchange Online/Office365
- Gmail™ Webmail

System Requirements

Supported Sharp MFP Models:

| | |
|------------------------|-----------------------|
| MX-3070V/3570V/4070V | MX-M905 ** |
| MX-3050V/3550V/4050V * | MX-B355W/B455W |
| MX-5050V/6050V* | MX-M3050/M3550/M4050* |
| MX-5070V/6070V | MX-M5050/M6050* |
| MX-6580N/7580N ** | MX-M3070/M3570/M4070 |
| MX-7090N/8090N | MX-M5070/M6070 |

*The following options are required:

- MX-AMX2 Application Communication Module
- PS3 Expansion Kit
- Direct Print Expansion Kit (Optional for Microsoft Office® file printing)

** • Supports Exchange on premise only
• SSO for Box is not supported

SHARP®

SHARP ELECTRONICS CORPORATION
100 Paragon Drive, Montvale, NJ 07645
1-800-BE-SHARP • www.sharppusa.com

Design and specifications subject to change without notice. Sharp, Sharp OSA and all related trademarks are trademarks or registered trademarks of Sharp Corporation and/or its affiliated companies. Microsoft, Office 365, Outlook, Sharepoint and OneDrive are registered trademarks of Microsoft Corporation in the United States and/or other countries. Box is a trademark of Box, Inc. Google Drive is a trademark of Google, Inc. All other trademarks are the property of their respective holders.