

LASER MFC ⁵ⁱⁿ¹

FAX • PRINTER • COPIER • COLOR SCANNER • PC FAX



The high-speed laser all-in-ones for your business.

- Print and copy at up to 30ppm
- 33.6K bps high-speed Super G3 fax modem
- Up to 50-page Auto Document Feeder
- Ethernet, High-Speed USB 2.0 and Parallel interfaces*
- Automatic duplex (two-sided) printing, copying, scanning* and faxing (MFC-8860DN, MFC-8870DW)
- 802.11b/g wireless interface (MFC-8870DW)

MFC-8460N

MFC-8860DN

MFC-8870DW

At your side.
brother®

Enhance security and reduce errors through these high-performance features

Walk-up access to LDAP network address books*

Save time and reduce errors with instant direct access through your network-connected MFC to a virtually infinite number of e-mail and fax addresses stored in your LDAP network address books. Simply use the large, clear 5-line LCD display on your MFC's control panel to view the contacts stored in your LDAP network address books and scroll to select the address you need. Then you can quickly send faxes and Internet faxes to your selection, and perform scan-to-e-mail-address functions – all directly from the listings in your LDAP network address book.

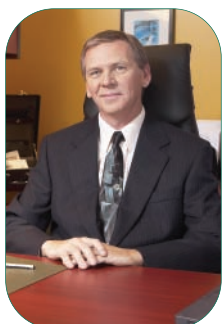


Enhanced scan-to-FTP-server features

Scan documents, images, and faxes, and post these to FTP sites directly through your network-connected MFC. It's ideal if you often post files to FTP sites for easy retrieval and download by permitted users inside your firm, perhaps in remote locations, or by corporate partners, such as clients, vendors, agents and others. Multiple FTP server profiles – specific sites and folder locations, access codes, and scanning preferences, for example – can be saved in presets for custom applications, cutting the time spent, and potential errors.

Scan to other fax-server applications*

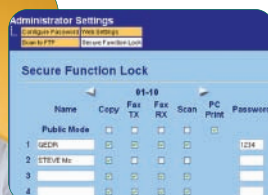
Law firms, accounting firms, consulting operations, and many other entities often use network-based fax-server applications. If you employ a leading network-based fax-server application in your enterprise, your MFC can be set up as a document scanning device to work with it.¹ Transmission of your faxes will then take place through your preferred network-based fax-server application, rather than through your MFC's built-in fax modem.



Boss Clearance:
All features



Intern Clearance:
Copy only



Feature lock by user

Walk-up copying, scanning, and faxing are all great conveniences with your MFC, but you may not want everyone to have access to every feature, especially if you are handling confidential records and data on a routine basis. So your MFC provides the ability for your administrator to set various levels of password-protected access to certain features, for each of up to 25 different users per machine. Through this feature, you could restrict specific employees such as part-time workers or interns from access to scan-to-e-mail functions or other avenues for sending data outside your walls.

The high-speed laser all-in-ones for your business

Speed, convenience and great print quality for everyone in your office.

For busy offices and small connected workgroups, Brother's new high-speed laser all-in-ones deliver exceptional versatility, print quality and performance in a highly efficient, space-saving design.

You can print, copy, fax, and scan from any connected PC – all from any one of these easy to use and maintain models.

If you've been searching for a better way to provide the variety of functions you and your people need without the headaches and unnecessary expense of buying and maintaining multiple devices, these new Multi-Function Center® products from Brother are the answer.



High-quality color scanning

Up to 50 page auto document feeder

1200 DPI
up to x1200

Backlit 5-line LCD



Built-in Super G3 33.6K bps fax-modem and enhanced fax features

BR-Script3
for PostScript® 3™ Compatibility
& PCL6
For GDS Printing

The Brother MFC-8460N

High-Performance, All-in-One for your Business or Workgroup

The Brother MFC-8460N can dramatically boost productivity in your home office, small office, or small connected workgroup. It easily replaces a variety of dedicated devices by including high-speed printing, convenient flatbed copying, color and mono scanning, faxing and more – all in one space-saving product.

There's no trade-off in performance and features for all this convenience.



Improve productivity and efficiency, and be ready for the future.

Convenient flatbed design – plus an auto document feeder

Lift the top cover and you'll see a legal-size (8.5" x 14") glass, ready for you to make copies, scan documents or images and for faxing, too. It's perfect for copying, multi-copying (up to 99), color or mono scanning, or faxing pages from bound materials like reports and magazines. The top cover even lifts up further to accommodate bulkier materials like books.

You'll get great copies at up to 1200 x 600 dpi resolution, and high-quality color scans at up to 19200 x 19200 (interpolated) resolution.

For copying, scanning or faxing multiple-page documents, use the built-in auto document feeder to automatically feed up to 50 pages at a time, unattended – a great time saver.



Standard 50-sheet fold-down multi-purpose tray

Standard 250-sheet adjustable paper tray

Optional 2nd 250-sheet adjustable paper tray[†]

Versatile paper handling, with expandability for your future needs

These models all ship with a 250-sheet paper tray that can be adjusted to handle letter or legal-size paper. They also feature a 50-sheet, fold-down multi-purpose tray for envelopes, card stock, or for feeding individual sheets, such as letterhead. An optional second 250-sheet adjustable lower paper tray (LT-5300[†]) can be added to boost total input capacity to up to 550 sheets.

Network-ready – for the wired or wireless network you have now, or will have in the future

These MFCs are ready for the way you work now – or the way you might work in the future. If you don't already have a network just connect one of these MFCs to your PC using its High-Speed USB 2.0 or Parallel interface. If you already have an Ethernet network these Brother MFCs offer a built-in Ethernet interface and easy setup software to connect to your wired or wireless router.



Connect one user directly via USB or Parallel...



...or multiple users via wired or wireless router on a shared network

Models with duplex printing, copying and scanning

The Brother MFC-8860DN



with automatic two-sided printing, copying, scanning* and faxing

The Brother MFC-8860DN provides all the features, convenience, versatility and performance of the MFC-8460N and adds built-in automatic duplex (two-sided) printing, copying, scanning* and faxing. This feature can help you cut paper costs by as much as half, while giving you the ability to create professional two-sided documents for reports, proposals and other tasks, quickly and easily.



Output as 2 single sheets



or



One double-sided (duplexed) sheet

Automatic duplex printing

You can take a typical document file and simply choose to print it as a duplexed document right from the MFC-8860DN's print menu, with the orientation you prefer. Your selection then happens automatically, without the need to reload the paper to print the other side.

Automatic duplex copying and scanning*

Now you can copy or scan two sides of the same document and either print the copy or store the scan as two single-sided pages, or as a single two-sided page. Or, you can copy or scan two single-sided documents and produce a copy or store a scan as a single two-sided page.

Automatic duplex faxing

Scan a two-sided document for faxing with only one step and it will be received as two single-sided pages. Also, cut paper costs by printing out the multiple-page faxes you receive as double-sided pages.

The Brother MFC-8870DW



with automatic duplex functions and wireless network connectivity

The Brother MFC-8870DW provides the automatic two-sided printing, copying, scanning* and faxing functionality of the MFC-8860DN, and the same great features, plus 802.11b/g wireless connectivity.

This means that if you have an 802.11b/g-enabled PC or notebook, you can connect to the MFC-8870DW wirelessly, right from that PC or notebook, in AD HOC mode. In infrastructure mode – the most common wireless environment – you can connect and take advantage of all the features of the MFC-8870DW through your wireless access point/router.

It's a perfect fit for offices where you have a mix of wired and wireless-enabled desktop PC and notebook users, some of whom connect via an established Ethernet network, and others who are on the move during the work day. It's also ideal for offices with "drop-in" users – such as sales people equipped with wireless-enabled notebooks – who normally work outside the office.

Connection possibilities with the MFC-8870DW



MFC-8460N / MFC-8860DN / MFC-8870DW

Technical Specifications



Key Features at a Glance

MFC-8460N

- Up to 30ppm print speed
- Up to 1200 x 1200 dpi print resolution
- High-Speed USB 2.0, Parallel, and Ethernet interfaces*
- Up to 50-sheet auto document feeder
- Flatbed design for easy copying, faxing and scanning of bound documents
- Legal-size document glass



MFC-8860DN

Includes the features of the MFC-8460N plus...

- Built-in automatic duplex printing, copying, scanning* and faxing

MFC-8870DW

Includes all of the above mentioned features plus...

- Built-in 802.11b/g wireless interface
- SecureEasySetup™ (with your capable router†)



		MFC-8460N	MFC-8860DN	MFC-8870DW
Fax	Modem Speed/Best Transmit Speed	33.6K bps		
	Auto Document Feed Capacity	Up to 50 Pages		
	Paper Capacity (Std./Max. ¹ Pgs.)	300/550 Sheets		
	Paper Size(s)	Letter, Legal, A4, B5, A5, B6, A6, EXE		
	Standard Memory Capacity (Max. Pgs.)	32MB (600)		
	Broadcasting (# of Locations)	390		
	Quick Scan ² (Seconds/Page)	Yes (2 sec.)		
	Remote Retrieval	Yes		
	Fax Forwarding/Paging	Yes		
	Dual Access	Yes		
	One Touch/Speed Dial Locations	40/300		
	Fax Compatibility	ITU-T Super G3		
Coding Method(s)	MH / MR / MMR / JBIG			
Auto Fax Receipt Date/Time Stamping	Yes			
Print	Printing Method	Laser		
	Print Speed (Max. ppm)	30ppm		
	Print Resolution (Max. dpi)	Up to 1200 x 1200		
	Duplex Printing	NA	Yes	Yes
	Parallel & High-Speed USB 2.0 Interfaces*	Yes		
	Ethernet Interface*	Yes		
	802.11 b/g Wireless Interface	NA	NA	Yes
	Windows® Compatibility ⁴	98/98SE, Me, 2000, NT® 4.0, XP		
	Emulation(s)	PCL6, BR-Script 3 (PostScript®3 Compatible)		
Mac® Compatibility	OS 9.1-9.2, OS X 10.2.4 or greater			
Copy	Copy Speed (Max. cpm)	30cpm		
	Duplex Copying	NA	Yes	Yes
	Copy Resolution (Max. dpi)	Up to 1200 x 600 dpi		
	Sorting Function	Yes		
	Reduction/Enlargement	25% – 400% – 1% increments		
Scan	Scanning (Color & B&W)	Flatbed		
	Duplex Scanning	NA	Yes	Yes
	Scanning Profile Presets	Yes	Yes	Yes
	Optical Resolution (Max. dpi)	600 x 2400		
	Interpolated Resolution (Max. dpi)	19200 x 19200		
	Document Viewer & OCR Software	ScanSoft® PaperPort® SE with OCR Presto!® PageManager® with OCR for Mac®		
Other	PC Fax Software	Yes		
	Maximum Printer Memory ¹	544 MB		
	Consumable Type (Max. Yield)	TN-550 (approx. 3,500 pgs.)▼ TN-580 (approx. 7,000 pgs.)▼* DR-520 replacement drum unit ³		
	Unit Dimensions (W" x D" x H")	20.9 x 17.7 x 18.7		
	Carton Dimensions (W" x D" x H")	24.7 x 22.3 x 22.6		
	Unit Weight (lb.)	36.3	36.8	36.8
	Carton Weight (lb.)	49.0	49.5	49.5
	UPC Code	0 12502 61508 8	0 12502 61509 5	0 12502 61510 1

Minimum System Requirements and Supported PC Software Functions								
Computer Platform & Operating System Version		Supported PC Software Functions	PC Interface	Processor Minimum Speed	Minimum RAM	Recommended RAM	Available Hard Disk Space	
							for Drivers	for Applications
Windows® Operating Systems	98, 98SE	Printing, PC Fax ¹ , Scanning ⁴	Parallel, USB, Ethernet, Wireless 802.11 b/g ¹	Intel® Pentium®II or equivalent	32MB	128MB	90MB	130MB
	Me		Parallel, USB, Ethernet, Wireless 802.11 b/g ¹		64MB	256MB		
	NT® Workstation 4.0		Parallel, USB, Ethernet, Wireless 802.11 b/g ¹					
	2000 Professional		Parallel, USB, Ethernet, Wireless 802.11 b/g ¹		128MB	256MB	150MB	220MB
	XP Home ¹ XP Professional ¹		Parallel, USB, Ethernet, Wireless 802.11 b/g ¹	AMD Opteron™ AMD Athlon™ 64 Intel® Xeon™ with Intel® EM64T	256MB	512MB	150MB	220MB
	XP Professional x64 Edition ¹		Parallel, USB, Ethernet, Wireless 802.11 b/g ¹		256MB	512MB	150MB	220MB
Apple® Macintosh® Operating System	OS 9.1-9.2	Printing, PC Fax Send, Scanning ²	USB ³ , Ethernet	All base models meet minimum requirements.		64MB	80MB	200MB
	OS X 10.2.4 or greater	Printing, PC Fax Send, Scanning ²	USB ³ , Ethernet, Wireless 802.11 b/g ¹	128MB	160MB			

¹For WIA, 1200x1200 resolution. Brother Scanner Utility enables to enhance up to 19200 x 19200 dpi.

²Dedicated "Scan to" key functions only in the Mac OS® X 10.2.4 or greater.

³Network PC Receive not supported in Windows NT®4.0.

⁴Network Scanning not supported in Windows NT® Workstation 4.0 and Mac OS® 9.1-9.2 (Scan to Email Server <MFC-8860DN/8870DW only> and Scan to FTP are supported).

⁵A wireless network connection is supported only between the Brother device and an access point for PCs running Windows NT® Workstation 4.0 and XP Professional x64 Edition (Ad-hoc connection is not supported).

⁶Third party USB ports are not supported.

⁷Wireless 802.11 b/g only available on the MFC-8870DW model.

For the latest driver updates, access the Brother Solutions Center at <http://solutions.brother.com>

¹For WAA, 1200x1200 resolution. Brother Scanner Utility enables to enhance up to 19200 x 19200 dpi.
²Dedicated "Scan to" key functions only in the Mac OS® X 10.2.4 or greater.
³Network PC Fax Receive not supported in Windows NT® 4.0.
⁴Network Scanning not supported in Windows NT® Workstation 4.0 and Mac OS® 9.1-9.2
(Scan to Email Server - MFC-8860DN/8870DW only; and Scan to FTP are supported).
⁵A wireless network connection is supported only between the Brother device and an access point for PCs running Windows NT® Workstation 4.0 and XP Professional x64 Edition (Ad-hoc connection is not supported).
⁶Third party USB ports are not supported.
⁷Wireless 802.11 b/g only available on the MFC-8870DW model.

For the latest driver updates, access the Brother Solutions Center at <http://solutions.brother.com>

Optional Supplies and Accessories†

TN-550: Approx. 3,500 pages at 5% coverage*
TN-580: Approx. 7,000 pages at 5% coverage*
DR-520: Approx. 25,000 page replacement drum*
LT-5300: 250-sheet lower paper tray



¹ Requires additional purchase
² Based on 5% letter size page coverage
³ Cables not included
⁴ Duplex scanning through ADF
⁵ Letter size maximum
⁶ Available on MFC-8860DN and MFC-8870DW only

¹ Brother MFC-8860DN & MFC-8870DW models capable of integrating with RightFax fax servers only
² Using Brother No. 1 Chart with JBIG coding and standard resolution
³ Drum life may vary based on various types of use
⁴ See system requirements



For more information please visit our Web site at www.brother.com

At your side.
brother
www.brother.com