

### imageCLASS MF450 Series

Print up to 40 ppm (MF453dw)/  
34 ppm (MF452dw/MF451dw)

Print up to 8.5" x 14"

900-sheet maximum paper capacity

Three- and one-year limited warranties standard<sup>1</sup>

Designed for small and medium-size businesses, the Canon imageCLASS MF450 Series models balance speedy performance, minimal maintenance, and the ability to add an optional paper tray. A 5" color touchscreen delivers an intuitive user experience and can be customized by a device administrator to help simplify many daily tasks.

Black-and-White  
Multifunction



MF453dw Shown



#### USABILITY

- 5" intuitive, color touchscreen with smartphone-like usability.
- A unique, customizable device experience with Application Library.
- Create Wi-Fi® Direct hotspot from the printer to establish direct connection to compatible mobile device(s)<sup>2</sup> without the need for an external router.



#### QUALITY AND RELIABILITY

- Canon's signature reliability and engine technologies help keep productivity high and help minimize the impact on support resources.
- Intuitive maintenance videos are available for common tasks like consumables replacement.
- Designed to achieve maximum uptime with status notifications to help keep supplies replenished.



#### WORKFLOW EFFICIENCY

- Supports compatible mobile solutions<sup>2</sup> for printing and scanning.
- Scan and convert documents to searchable digital files through a single-pass duplex document feeder.
- Designed for small print jobs with first-print time as fast as 5.4 seconds.



## COST EFFICIENCY

- High-capacity, all-in-one cartridge helps reduce overall supply costs.
- Out-of-the-box, standard two-sided printing plus the ability to print multiple pages onto one page helps to reduce paper consumption.



## SECURITY FEATURES

- Short-term memory storage helps reduce risk of confidential information loss.
- Security settings can be set behind an administrator log-in.
- Verify System at Startup is a process to help verify the validity of the device firmware and Application Library from unauthorized modifications.



## SUSTAINABILITY

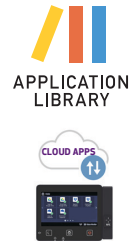
- A combination of fusing technologies and low-melting-point toner minimizes power requirements and helps achieve low energy consumption.
- Encourages environmentally conscious work practices by enabling multiple settings that can help save paper and energy.
- ENERGY STAR® certified and currently rated EPEAT® Silver.<sup>3</sup>

### KEY FEATURES



## CUSTOMIZABLE, 5-INCH COLOR TOUCHSCREEN

Easily access the features you use the most with Application Library. Application Library's Cloud App feature also supports cloud storage directly from an external webpage. Print or scan<sup>4</sup> documents directly to or from DropBox, Google Drive, or OneDrive.



## EASY SETUP

- 1) Press "Wireless LAN" Button
- 2) Select "Network"
- 3) Enter Encryption Key/Password
- 4) Finalize



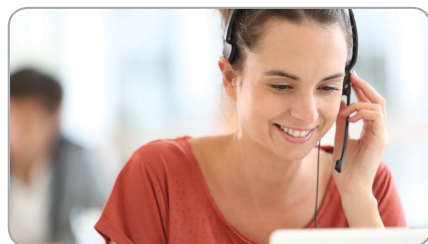
## MOBILE-FRIENDLY DEVICE ACCESS

From application-based to cloud-based to device native, the imageCLASS MF450 Series models offer a variety of methods for printing from a mobile phone or tablet across compatible iOS and Android devices.<sup>2</sup> The Canon PRINT Business application, which supports both platforms, offers access to additional device settings as well as the ability to scan from the printer to a compatible mobile phone or tablet.



## FAST, SINGLE-PASS DUPLEX SCANNING

The imageCLASS MF450 Series leverages a single-pass document feeder for two-sided scanning at up to 70 images per minute (ipm) in black and white or up to 26 ipm in color. Scanned files can be converted into multiple file formats, including Hi-Compression PDF and Searchable PDF (OCR).



## SERVICE AND SUPPORT

Canon U.S.A. takes pride in delivering complete customer satisfaction. Canon's friendly and knowledgeable Customer Service Team provides expert assistance for every level of experience, offering the support, peace of mind, and value your business deserves. The MF453dw comes with a three-year limited warranty, and the MF452dw/MF451dw include a one-year limited warranty.



**Main Unit****Core Functions (Standard)**

MF453dw:	Print, Copy, Scan
MF452dw:	Print, Copy, Scan, Fax
MF451dw:	Print, Copy, Scan

**Item Code**

MF453dw:	5161C011
MF452dw:	5161C012
MF451dw:	5161C013

**Processor**

Canon Custom Processor

**Control Panel**

5" Color Touch Panel

**Memory**

1 GB

**Standard Interface Connection**

USB 2.0 High-Speed, 10/100/1000Base-T Ethernet (Network), Wi-Fi 802.11b/g/n, Wi-Fi® Direct Connection

**Paper Capacity (Letter, 20 lb. Bond)**

Standard:	350 Sheets
Maximum:	900 Sheets

**Paper Sources (Letter, 20 lb. Bond)**

Standard:	250-sheet Paper Cassette, 100-sheet Multipurpose Tray
Optional:	550-sheet Paper Cassette (Cassette Unit-AH1)

**Paper Output Capacity (Letter, 20 lb. Bond)**

Standard: 65 Sheets

**Supported Media Types**

Cassettes:	Thin, Plain, Recycled, Thick, Bond
Multipurpose Tray:	Thin, Plain, Recycled, Thick, Bond, Label, Envelope (10 Envelopes)

**Supported Media Sizes**

Cassettes:	Letter, Legal, Statement, Executive Custom (Min. 4.1" x 5.8" to Max. 8.5" x 14")
Multipurpose Tray:	Letter, Legal, Statement, Executive Envelope: COM10, Monarch, C5, DL Custom (Min. 3" x 5" to Max. 8.5" x 14")

**Supported Media Weights**

Cassettes:	16 lb. Bond to 32 lb. Bond (60 to 120 g/m <sup>2</sup> )
Multipurpose Tray:	16 lb. Bond to 43 lb. Bond (60 to 163 g/m <sup>2</sup> )

**Warm-up Time**

From Power On:	14 Seconds or Less
From Sleep Mode:	4 Seconds or Less

**Dimensions (W x D x H)**

Standard (Desktop):	17.8" x 18.3" x 15.4" (453 mm x 464 mm x 392 mm)
---------------------	---

**Installation Space (W x D x H)**

Standard (Desktop):	17.9" x 34.8" x 26.2" (453 mm x 883 mm x 664 mm)
Fully Configured:	17.9" x 34.8" x 31.3" (453 mm x 883 mm x 795 mm)

**Weight<sup>5</sup>**

Unit:	Approx. 35.7 lb. (16.2 kg)
Boxed Weight:	Approx. 46 lb. (20.8 kg)

**Operating System**

UFR II/PCL/PS: Windows® 8.1/10, Windows Server 2012 R2/2016/2019, Mac OS X v10.11 (or later)

**Print Specifications****Printing Method**

Laser Beam Printing

**Print Speed<sup>6</sup>**

Up to 40 ppm (Letter); Up to 32.4 ppm (Legal)

**First-Print-Out Time**

Approx. 5.4 Seconds

**Recommended Monthly Page Volume**

750 - 4,000 Pages

**Print Resolution (dpi)**

600 x 600

**Standard Page Description Languages**

UFR II, PCL®6, PCL®5, Adobe PostScript 3®

**Double-Sided Printing**

Automatic (Standard)

**Direct Print**

Available from USB Memory (JPEG, TIFF, PDF)

**Printing from Mobile and Cloud-based Services<sup>2</sup>**

Apple® AirPrint®, Canon PRINT Business, Mopria™ Print Service

**Fonts**

PCL:	45 Fonts
PS:	136 Fonts

**Print Features**

Secured Watermark, Header/Footer, Page Layout, Two-sided Printing, Mixed Paper Sizes, Orientations, Toner Reduction, Poster Printing, Print Date, Collating, Grouping, Page Border,<sup>7</sup> Booklet Printing<sup>7</sup>

**Copy Specifications****Copy Speed**

MF453dw:	40 ppm
MF452dw/451dw:	34 ppm

**First-Copy-Out Time (Letter)**

Approx. 6.2 seconds

**Copy Resolution (dpi)**

600 x 600

**Copy Size**

Platen: Up to Letter  
ADF: Up to Legal

**Multiple Copies**

Up to 999 Copies

**Magnification**

25% - 400% (1% Increments)

**Preset Reductions**

25%, 50%, 64%, 78%

**Preset Enlargements**

129%, 200%, 400%

**Copy Features**

Preset R/E Ratios by Area, Two-Sided, Density Adjustment, Original Type Selection, Two-sided Original, Sort, N on 1, Different Size Originals, Sharpness, Erase Frame, Copy ID Card, Copy Passport, Paper Settings, Favorite Settings, Cancel, Collate

**Scan Specifications****Type**

Single-Pass Duplexing Automatic Document Feeder

**Document Feeder Paper Capacity**

50 Sheets (20 lb. Bond)

**Document Feeder Supported Media Sizes**

Legal, Letter, Statement

**Document Feeder Supported Media Weights**

Single and Double-sided scanning: 13-28 lb. Bond (50-105 g/m<sup>2</sup>)

**Platen Acceptable Originals**

Sheet, Book

**Pull Scan**

ScanGear MF for TWAIN, WIA, and ICA

**Scan Resolution (dpi)**

Up to 600 x 600

**Scan-to-Mobile Devices**

Canon PRINT Business

**Scan Speed (Letter)**

Single-sided:	13/38 ipm (300 x 300 dpi) (Color/BW)
Double-sided:	26/70 ipm (300 x 300 dpi) (Color/BW)

**Memory Media**

Standard USB Memory (JPEG, TIFF, PDF)

**Send Specifications****Destination**

Email/Internet FAX (SMTP), SMB, FTP, Super G3 FAX

**Address Book**

LDAP (50)/Local (300)/Speed Dial (281)

**Send Resolution (dpi)**

300 x 300

**Communication Protocol**

File:	FTP, SMB
Email/iFax:	SMTP, POP3, iFax (Simple)

**File Format**

Standard: TIFF, JPEG, PDF (Compact, Searchable)

**Fax Specifications (MF452dw only)****Modem Speed**

Super G3:	33.6 kbps
G3:	14.4 kbps

**Compression Method**

MH, MR, MMR, JBIG

**Resolution (dpi)**

400 x 400, 200 x 400, 200 x 200, 200 x 100

**Sending/Recording Size**

Statement to Legal

**Fax Memory**

Up to 512 Pages

**Speed Dials**

Max. 281 Dials

**Group Dials/Destinations**

Max. 299 Dials

**Sequential Broadcast**

Max. 310 Addresses

**Memory Backup**

Yes

**Fax Features**

Sender's Name, Direct Send, TX Report, Sequential Broadcasting, Sending 2-Sided document, Resolution, RX mode, Density, Sharpness, Favorite Settings

**Security Specifications****Authentication**

Standard: Department ID Authentication

**Data**

Standard: Verify System at Startup

**Network**

Standard: IP/MAC Address Filtering, IPSEC, TLS Encrypted Communication, SNMP V3.0, IEEE 802.11b/g/n, IPv6, SMTP Authentication, POP Authentication before SMTP

**Document**

Standard: Secure Print, Searchable PDF

**Wi-Fi Authentication Methods**

Wi-Fi Infrastructure Mode:	WEP 64/128 bit, WPA-PSK (TKIP/AES), WPA2-PSK (AES)
Wi-Fi Access Point:	WPA2-PSK (AES)

**Environmental Specifications****Operating Environment**

Temperature:	50 to 86° F
Humidity:	20 to 80% RH (no condensation)

**Power Requirements**

AC 120-127 V: 5.9 A, 60 Hz

**Power Consumption**

Maximum:	Approx. 1330 W
Standby:	Approx. 10 W
Sleep Mode:	Approx. 0.9 W
Typical:	0.34 kWh

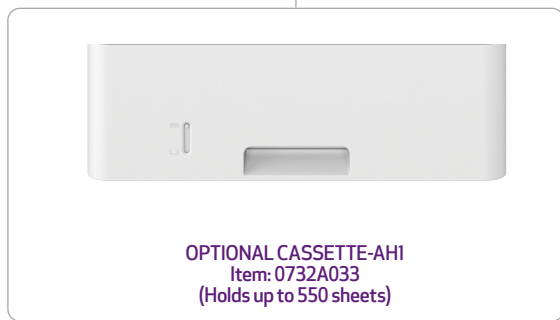
Electricity Consumption (TEC) Rating:

**Standards**

ENERGY STAR® Qualified, Currently Rated EPEAT Silver<sup>3</sup>



MF453dw Shown



**Extended Service Plans Available For Purchase**

If service is required, you may receive a replacement model<sup>8</sup> via advanced exchange. In this case, you'll be instructed to return the damaged unit to Canon in the replacement packaging, which also includes a prepaid shipping label. Or you may choose to carry your existing equipment to a local Authorized service facility for repair.

**Canon eCarePAK (Exchange/Carry-In)**

**MF453dw**

Canon extended service plans extend standard three-year limited warranty<sup>9</sup> support to cover additional one to two years.

**MF453dw: Three-year Warranty**

- One-Year: 5707B042
- Two-Year: 5707B043

**MF452dw/MF451dw**

Canon extended service plans extend standard one-year limited warranty<sup>9</sup> support to cover additional one to four years.

**MF452dw/MF451dw: One-year Warranty**

- One-Year: 5707B042
- Two-Year: 5707B043
- Three-Year: 5707B044
- Four-Year: 5707B045

**GENUINE CONSUMABLES**

Always look for the Canon anti-counterfeiting hologram on your Canon GENUINE product packaging.

- Cartridge 057<sup>▲</sup>  
(Item No.: 3009C001)  
Yields 3,100 Pages
- Cartridge 057 H  
(Item No.: 3010C001)  
Yields 10,000 Pages



Use of Canon GENUINE toner cartridges helps provide longer equipment life, high yields, reliable performance, high-quality output, and minimal jamming.

<sup>▲</sup>This Cartridge is included with purchase.

<sup>1</sup> Three-year limited warranty (MF453dw), one-year limited warranty (MF452dw/MF451dw).

<sup>2</sup> Canon PRINT Business is a free app available on the App Store<sup>®</sup> and Google Play<sup>™</sup> Store. For more information, including compatibility, please visit [usa.canon.com/mobile-app](http://usa.canon.com/mobile-app). Please see the respective websites for Apple AirPrint and Mopria Print Service for compatibility and additional information.

<sup>3</sup> For current EPEAT rating (Gold/Silver/Bronze), please visit [epeat.net](http://epeat.net).

<sup>4</sup> Subscription to a third party cloud service is required, and subject to third party terms and conditions.

<sup>5</sup> Includes consumables.

<sup>6</sup> Print speed is based on internal testing. Print speed may vary, depending on the number of copies selected as well as the settings for size, type, and orientation of paper.

<sup>7</sup> Windows support only.

<sup>8</sup> Replacement model may be new or refurbished quality.

<sup>9</sup> Warranty program is subject to certain conditions and restrictions. See warranty card for details.



[usa.canon.com](http://usa.canon.com)



As an ENERGY STAR partner, Canon U.S.A., Inc. has qualified these models as meeting the ENERGY STAR energy efficiency criteria through an EPA recognized certification body. ENERGY STAR and the ENERGY STAR mark are registered U.S. marks. Canon, imageCLASS, and the GENUINE logo are registered trademarks of Canon Inc. in the United States and may also be registered trademarks or trademarks in other countries. Wi-Fi is a registered trademark of the Wi-Fi Alliance. Android and Google Play are trademarks of Google Inc. iPad, iPhone, iPod touch, Mac, and the App Store are trademarks of Apple Inc., registered in the United States and/or other countries. AirPrint and the AirPrint logo are trademarks of Apple Inc. Mopria and the Mopria logo are trademarks of the Mopria Alliance, Inc. Windows and Windows Server are trademarks of Microsoft Inc. in the United States and/or other countries. All other referenced product names and marks are trademarks of their respective owners. Canon products offer certain security features, yet many variables can impact the security of your devices and data. Canon does not warrant that use of these features will prevent security issues. Nothing herein should be construed as legal or regulatory advice concerning applicable laws; customers must have their own qualified counsel determine the feasibility of a solution as it relates to regulatory and statutory compliance. Specifications and availability subject to change without notice. Not responsible for typographical errors.

©2022 Canon U.S.A., Inc. All rights reserved.

