



**Wide Format Folding System
Designed for**

KIP 800 COLOR SERIES

KIP 70 B&W SERIES

KIPFold 1800





KIPFOLD 1800

Wide Format Document Folding System

Perfect combination of: **Automation** | **Ease of Use** | **High Speed Productivity**



SINGLE TOUCH AUTOMATION



KIP Smart Touchscreen

INTUITIVE DESIGN

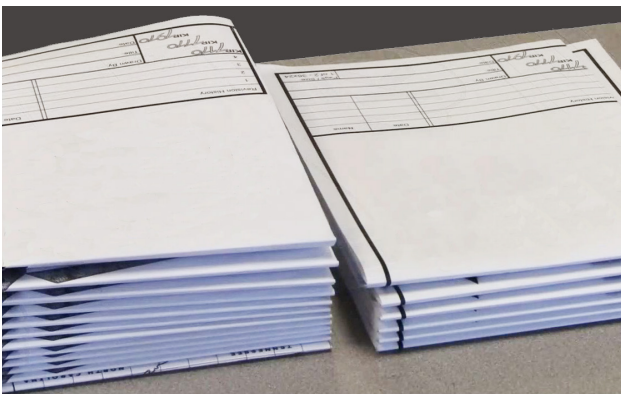
- Automatic Title Block Detection
- Automatic Fold by Page Size
- Customized Fold Presets
- Advanced Technical Interface
- Full Bi-Directional Communication
- Superior Job Recovery Functionality
- KIP System K Software Integration
- Metric and Imperial Standard Size Folds

FOLD QUALITY & RELIABILITY

KIPFold 1800 with KIP System K Software integration provides seamless workflow to the KIP 800 Color Series and KIP 70 Series Monochrome print systems.

KIPFold 1800 is built to exacting standards, featuring a metal frame and stainless steel feed guide with low static transfer system for consistent and reliable operation. High quality components, sensors, precision bearings and solid design ensure precision and accurate folding.

The KIPFold 1800 uses proven folding technology based on a precision roller design for high production print environments. KIPFold 1800 offers industry leading fold quality, exact fold delivery, precise packets, and crisp fan folded documents.



Portrait Packet Styles



AUTOMATION



EASE OF USE



PRECISE FOLDS



SMART TOUCHSCREEN



RELIABILITY



QUIET OPERATION



SAVES TIME

VERSATILE PRODUCTION

Quiet Unattended Automation

The KIP 1800 folding system features uninterrupted folding production and the flexibility to fold documents with consistent precision. Prints are folded allowing for easy document filing and distribution in portrait format, to portrait packets.

A reliable and durable fold roller system ensures maximum packet production that reduces operator interaction. Users may conveniently select fold style preferences or no folding at their workstation before printing.

KIPFold 1800 Features:

- Portrait Packet Styles
- Offline Manual Folding (Optional)
- Conveyor Stacking up to 80 Packets

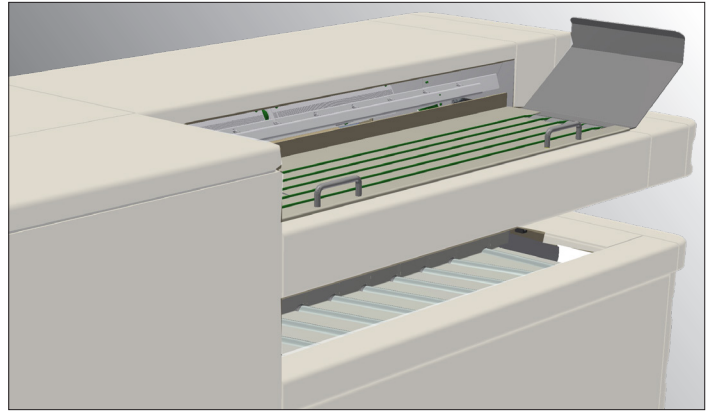
KIP SYSTEM K SOFTWARE SYSTEM INTEGRATION

This unique integrated solution allows complete control of the folder and folding packets directly from all KIP Applications including the KIP Touchscreen, KIP ImagePro, KIP PrintPro.NET, KIP Windows and AutoCAD drivers.

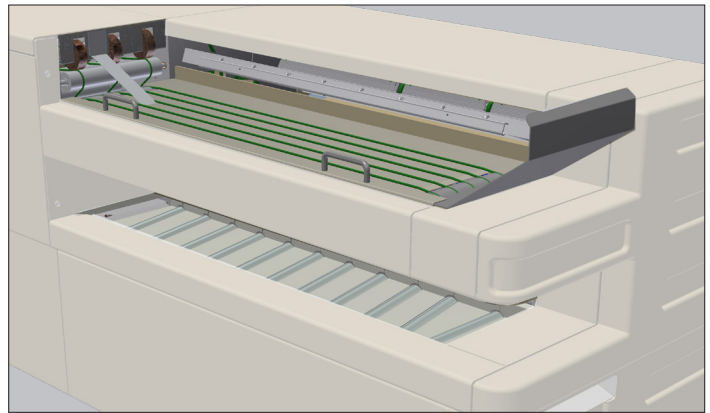
KIP System K Software allows all user levels to easily create and prepare prints for folding through the uniform software interface and application process.

KIPFold 1800 System K Software Features:

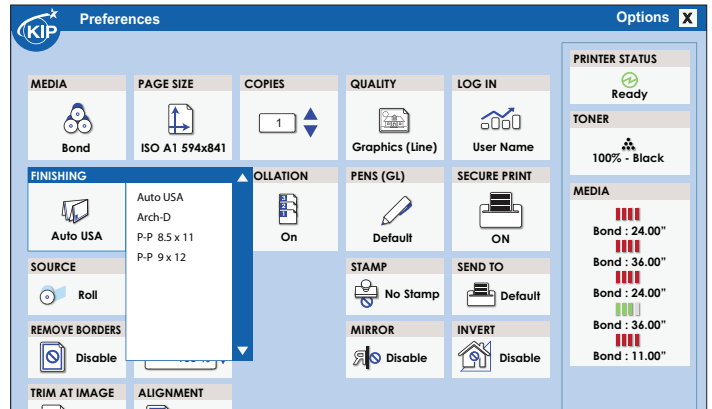
- Simplify custom folds with preset editor
- Print submission via PC and print drivers
- System error reporting through email notification
- Intelligent job recovery for accurate print accounting



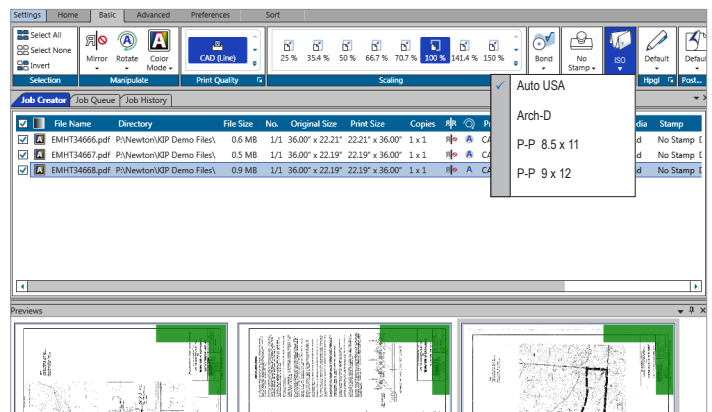
Standard Folding



Production Crossfold with Stacking



Windows Driver Fold Packet Selection



PC, Browser, and Driver Folder Control





KIPFOLD 1800

Wide Format Document Folding System

FOLD PACKET STYLES

The KIPFold 1800 utilizes portrait feed to portrait style packets.

PACKET TYPES

Portrait Feeding | Portrait Packet

ANSI 8.5 x 11

ANSI 7.5+1 x 11

ARCH 9.0 x 12

ARCH 8.0+1 x 12

8.5 x 12

8.5 x 11.3

Fan Fold

B-Size US fold



COMPATIBLE KIP MODELS

The KIPFold 1800 system is compatible for full integration with the following KIP production systems:



800 Series

KIP 860 | 870 | 880 | 890



70 Series

KIP 71 Series | 75 Series | 79 Series

WWW.KIP.COM | 800.252.6793