



# imageWARE Enterprise Management Console

## Centralized, Cross-Enterprise Network Device Management





# Maximize Uptime Across Your Enterprise

If you're frustrated by numerous individual device management utilities, imageWARE Enterprise Management Console delivers a streamlined, centralized point of control for all devices installed across your enterprise. This highly scalable, Web-based utility can manage multiple Canon and third-party devices on most customer networks.

To reduce traffic, multiple servers can be installed on your network in different locations. Simply place device management portals where they're needed most, and:

- **Identify device configurations**

IT administrators can identify finishing and feature configurations on the MFP or printer (e.g., all devices that support the "Booklet" function), and enter special data such as Asset Tag, Contact Number, and Lease End Date.

- **Group devices logically**

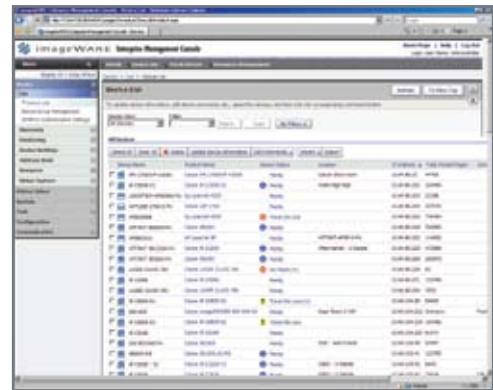
Simplify device location by logically grouping them (e.g., "N.Y. Office," "Building 2").

- **Manage third-party devices**

Consolidate management of all network devices that comply with the standard printer MIB, regardless of brand or manufacturer.

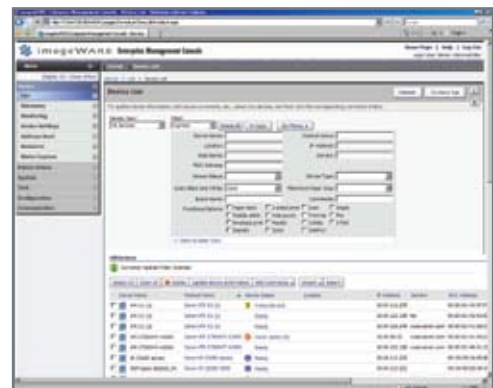
- **View device status in real time**

For fast resolution of errors such as paper jams or out-of-toner/ink conditions, connected devices immediately report status changes via e-mail to a system administrator or specific end-user.



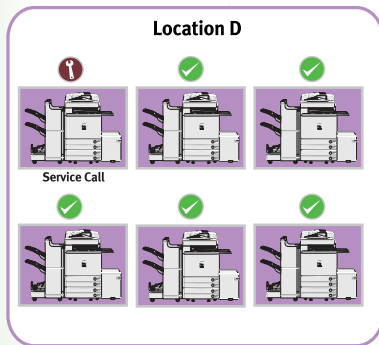
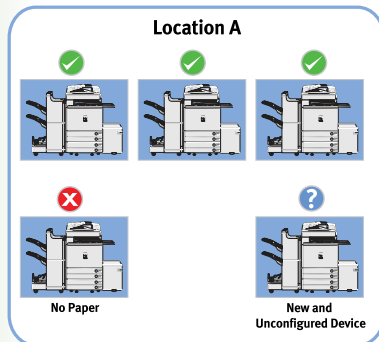
- **Customize viewing preferences**

Sort devices by protocol, type, or group (e.g., "all black-and-white printers") to segment and manage them as your environment demands.

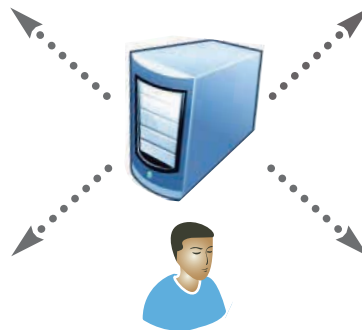




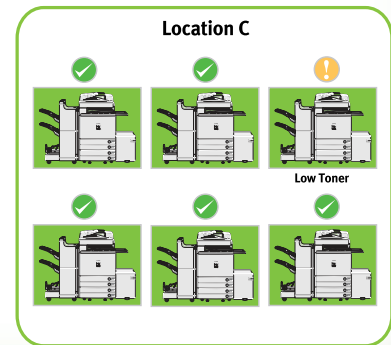
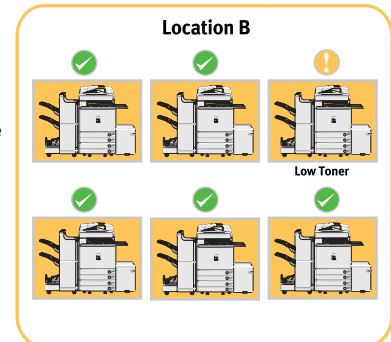
# imageWARE Enterprise Management Console



imageWARE Enterprise Management Console



- Centralized Device Management
- Device Discovery
- Device Configuration
- Device Monitoring
- Scalable

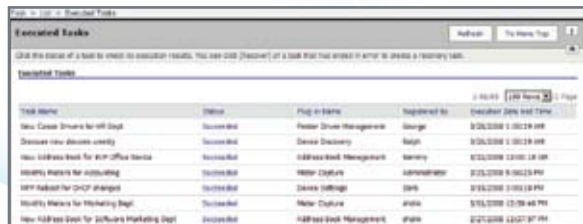




# Automated Task Management To Simplify Your Day

It's virtually impossible for any corporate IT staff to physically modify the Address Books of every individual device across the enterprise each time an employee joins, transfers, or leaves the company. Can you imagine the drain on productivity if this were done?

You can avoid such a scenario with imageWARE Enterprise Management Console. It automatically executes IT administrator-created instructions and tasks, either immediately or at timed intervals. Administrators have complete control to initiate any task. And, to minimize business disruption, device information can be retrieved and delivered overnight or on weekends.



The screenshot shows a window titled "imageWARE Enterprise Management Console" with a tab labeled "Executed Tasks". Below the tab is a table listing various tasks that have been executed. The table has columns for Task Name, Status, Plug-in Name, Registered To, and Executed Date and Time.

Task Name	Status	Plug-in Name	Registered To	Executed Date and Time
New Canon Drivers for all Dept	Succeeded	Printer Driver Management	George	9/26/2008 1:00:29 PM
Download new device drivers	Succeeded	Device Discovery	George	9/26/2008 1:00:29 PM
New Address Book for all Office Devices	Succeeded	Address Book Management	George	9/26/2008 1:00:29 PM
Locality Address for all existing	Succeeded	Meter Capture	addressbook	9/26/2008 9:00:00 PM
SNMP Inquiry for DHCP changes	Succeeded	Device Discovery	George	9/26/2008 9:00:00 PM
Locality Address for Marketing Dept	Succeeded	Meter Capture	George	9/26/2008 10:00:00 PM
New Address Book for Software Marketing Dept	Succeeded	Address Book Management	George	9/26/2008 10:00:00 PM

Some ways imageWARE Enterprise Management Console can improve your productivity include:

- **Discovery of new devices.**  
Through SNMP, you can query all Canon and third-party networked devices and automatically add new ones to the database for initial setup and configuration.
- **Delivery of device settings.**  
Retrieve device settings such as IP addresses, locations, and System Manager contact information, then reset them to default conditions to minimize help desk calls or reboot a fleet of devices.

- **Device monitoring.**

Devices can be monitored continuously, and common functions such as meter retrieval can be easily accomplished.

## Expand Your Control

Reduce your total cost of ownership even as you increase device control. The unique architecture of imageWARE Enterprise Management Console provides a foundation for future expansion through plug-ins that maximize printing assets across your entire enterprise. These plug-ins include:

- Meter Capture Plug-in
- Printer Driver Management Plug-in
- Address Book Management Plug-in
- Resource Management Plug-in

Plus, additional plug-ins that offer even more areas of functionality are soon to follow.

## Built-in Security

Security is a critical part of your enterprise—and an important part of imageWARE Enterprise Management Console. It features Secure Socket Layer (SSL) security and also offers functionality that prevents individual users from viewing device groups. In addition, the software also supports native Active Directory integration.





With imageWARE Enterprise Management Console, you can streamline device control, speed problem resolution, automate tasks, and reduce IT burdens. You can even expand the solution through plug-ins that optimize administration efficiency throughout your entire enterprise.

**ImageWARE Enterprise Management Console**

Home Page | Help | Log Out

Log in as user Admin Admin

Home | Settings | Reports | Log Out

Log in as user Admin Admin

**Portal Page**

**Notices**

Display notices in system-wide user notice or public notices.

- new notices: [Notice >>](#)

**Messages**

Exchange messages with other system users.

- unread messages: [Message >>](#)

**Unread Alerts**

Display a list of alerts associated with the previous report.

Task Name	Status	Plug-in Name	Assigned To	Completion Date and Time
Event System Logs	Succeeded	Configuration	Administrator	5/12/2008 1:08:57 AM
Discover new device weekly	Succeeded	Device Discovery	Administrator	5/12/2008 1:08:57 AM
Site Meter (Network)	Error	Network Capture	Site	5/12/2008 12:00:00 AM
Verify Plug-in license expiration	Succeeded	Configuration	Administrator	5/12/2008 12:00:07 AM
Task's Results	Error	Device Settings	andy	5/12/2008 12:00:57 AM
Discover new device weekly	Succeeded	Device Discovery	Administrator	5/12/2008 1:08:57 AM
Event System Logs	Succeeded	Configuration	Administrator	5/12/2008 1:08:57 AM
Site Meter (Network)	Error	Network Capture	Site	5/12/2008 12:00:59 AM
Verify Plug-in license expiration	Succeeded	Configuration	Administrator	5/12/2008 12:00:57 AM
Task's Results	Error	Device Settings	andy	5/12/2008 12:00:57 AM
Discover new device weekly	Succeeded	Device Discovery	Administrator	5/12/2008 1:08:57 AM
Event System Logs	Succeeded	Configuration	Administrator	5/12/2008 1:08:57 AM
Site Meter (Network)	Error	Network Capture	Site	5/12/2008 12:00:57 AM
Verify Plug-in license expiration	Succeeded	Configuration	Administrator	5/12/2008 12:00:57 AM
Task's Results	Error	Device Settings	andy	5/12/2008 12:00:57 AM
Event System Logs	Succeeded	Configuration	Administrator	5/12/2008 1:08:57 AM



# The Power to Manage Information

This is Canon imageWARE Enterprise Management Console.  
The next step in the evolution of device management  
software and an essential part of the Canon imageANYWARE  
strategy: the power to manage information regardless of  
form, content, or location.



Visit our Web site at **[www.imageWARE.com](http://www.imageWARE.com)**

A Smarter Way to Work

CANON is a registered trademark of Canon Inc. in the United States and may also be a registered trademark or trademark in other countries. IMAGEWARE is a registered trademark of Canon U.S.A., Inc. in the United States and is a trademark of Canon Inc. in certain other countries. IMAGEANYWARE is trademark of Canon. All referenced product names and other marks are trademarks or registered trademarks of their respective owners. Specifications and availability subject to change without notice.

©2008 Canon U.S.A., Inc. All rights reserved.

0126W182  
1008-IWEMC-5M-GKL



PRINTED ON RECYCLED  
PAPER IN THE U.S.A.

1-800-OK-CANON  
[www.usa.canon.com](http://www.usa.canon.com)

Canon U.S.A., Inc.  
One Canon Plaza  
Lake Success, NY 11042





## imageWARE Enterprise Management Console

### Printer Driver Management Plug-in

Remotely install, update, and uninstall Printer Drivers and add-ins on your network.

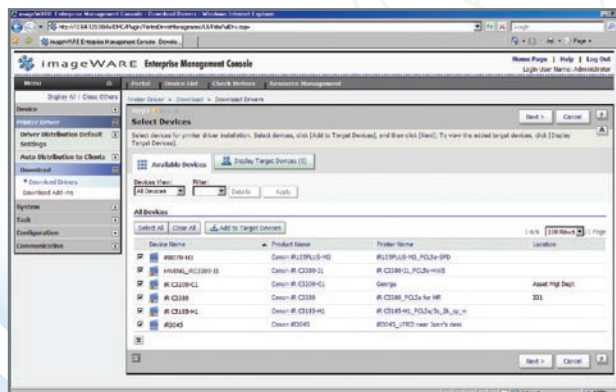
The optional Printer Driver Management Plug-in for imageWARE Enterprise Management Console lets you remotely install/update/uninstall printer drivers and add-ins to client computers on the network.

Using this Plug-in, you can:

- **Install, uninstall, and/or upgrade Canon printer drivers** on remote workstations.
- **Centralize management of Canon printer drivers.** Maintain consistency of printer drivers across all workstations. Easily install multiple drivers on workstations using a single EXE file, keeping things simple for IT staff to manage.

### System Requirements

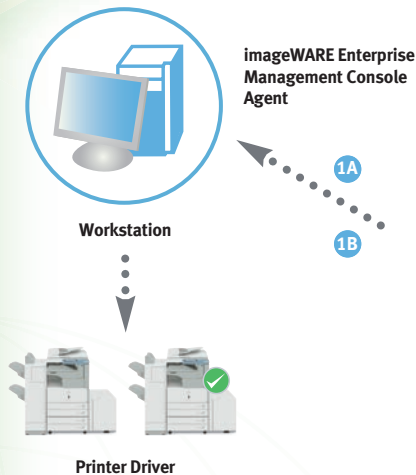
The Printer Driver Management Plug-in must be used with imageWARE Enterprise Management Console and conforms to the same system requirements.



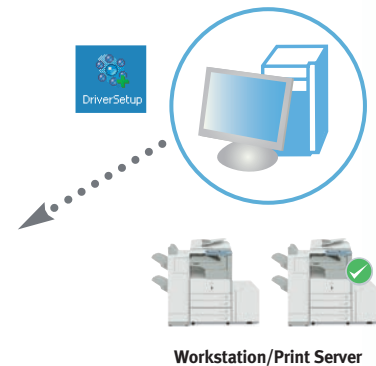


## How Does the Printer Driver Management Plug-in Work?

### Push Installation



### Pull Installation



When Printer Agent is installed,  
the IT Administrator can  
install/update or delete  
Printer Drivers on the workstation.

- 1 A task is created to install imageWARE Enterprise Management Console Printer Agent on the client workstation automatically.
- 2 Once the imageWARE Enterprise Management Console Printer Agent is installed successfully, a new task is created to install printer drivers on the workstation.

If imageWARE Enterprise Management Console Printer Agent is not installed on the workstation, then a Driver installer file is created from imageWARE Enterprise Management Console server and downloaded to the workstation. Once the executable file (EXE) is executed, the selected printer drivers are installed on the workstation/server.

Notes: Printers need to be discovered prior to installing printer drivers. Drivers need to be uploaded to the imageWARE Enterprise Management Console Printer driver repository (FTP).

**Canon**  
*image*ANYWARE

Visit our Web site at [www.imageWARE.com](http://www.imageWARE.com)

A Smarter Way to Work

CANON is a registered trademark of Canon Inc. in the United States and may also be a registered trademark or trademark in other countries. IMAGEWARE is a registered trademark of Canon U.S.A., Inc. in the United States and is a trademark of Canon Inc. in certain other countries. IMAGEANYWARE is trademark of Canon. All other referenced product names and marks are trademarks or registered trademarks of their respective owners and are hereby acknowledged.  
Specifications and availability subject to change without notice.  
©2008 Canon U.S.A., Inc. All rights reserved.

1-800-OK-CANON  
[www.usa.canon.com](http://www.usa.canon.com)

Canon U.S.A., Inc.  
One Canon Plaza  
Lake Success, NY 11042





imageWARE  
Enterprise Management Console

## Meter Capture Plug-in

## Easily retrieve device counters.

The optional Meter Capture Plug-in for imageWARE Enterprise Management Console automatically delivers information on how many copies and prints have been output—and in what format (e.g., color, black and white)—from network-connected devices.

Using this Plug-in, you can:

- **Automatically retrieve Canon device meters at scheduled intervals** (e.g., daily, weekly, monthly). It guarantees accuracy and eliminates the time-intensive and error-prone task of physically checking and recording each device's meter count.
- **Save retrieved meters in a CSV file for easy export.** Take meter data in its electronic format and deliver it to the next step.

- **Gather meter data from third-party devices.**  
Manage all Canon and other-brand devices (standard MIB-compliant and total counter) from a single console.
- **Simplify meter retrieval** with easy, task-based functionality and an intuitive user interface.

## System Requirements

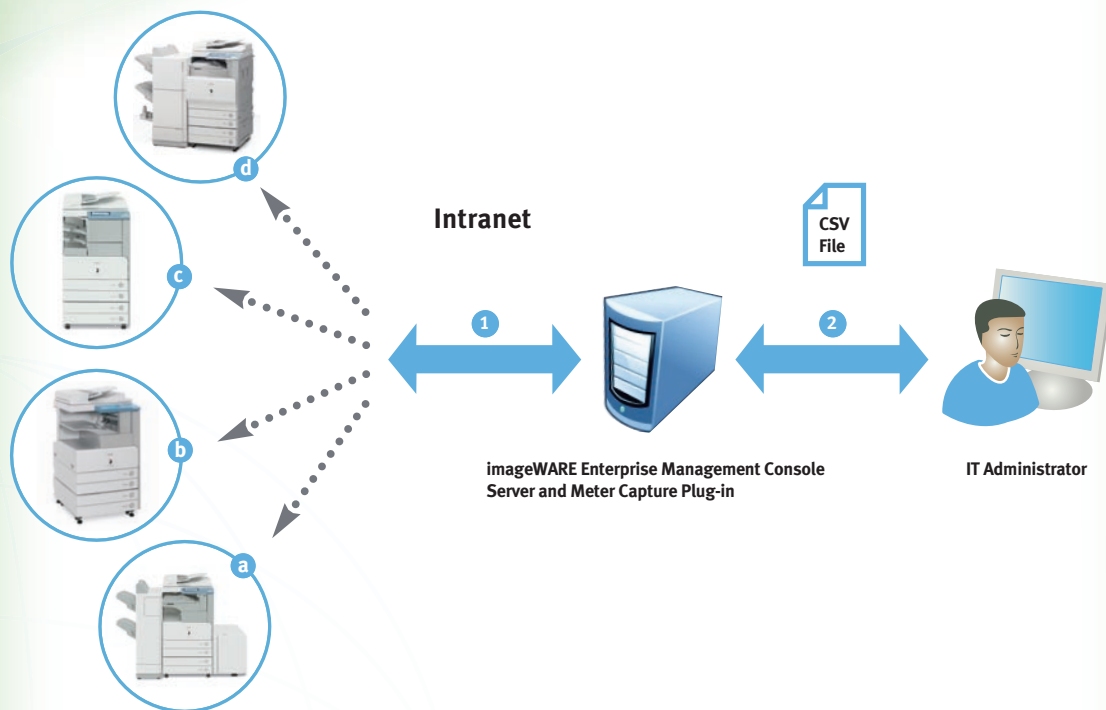
The Meter Capture Plug-in must be used with imageWARE Enterprise Management Console and conforms to the same system requirements.

The screenshot shows the Immunity Debugger interface. At the top, the title bar reads 'Immunity Debugger - C:\Users\j... Desktop\Software Marketing 1.exe'. Below the title bar, the 'Software Marketing 1: C:\Users\j... Desktop\Software Marketing 1.exe' window is active. The 'CPU Disassembly' window displays assembly instructions for the 'main' function. The instructions are as follows:

Address	Disassembly	Comment	Hex
00401000	push rbp		55
00401001	mov rbp, rsp		68
00401002	push r13		53
00401003	mov r13, rbp		48
00401004	push r13		53
00401005	mov r13, rbp		48
00401006	push r13		53
00401007	mov r13, rbp		48
00401008	push r13		53
00401009	mov r13, rbp		48
0040100A	push r13		53
0040100B	mov r13, rbp		48
0040100C	push r13		53
0040100D	mov r13, rbp		48
0040100E	push r13		53
0040100F	mov r13, rbp		48
00401010	push r13		53
00401011	mov r13, rbp		48
00401012	push r13		53
00401013	mov r13, rbp		48
00401014	push r13		53
00401015	mov r13, rbp		48
00401016	push r13		53
00401017	mov r13, rbp		48
00401018	push r13		53
00401019	mov r13, rbp		48
0040101A	push r13		53
0040101B	mov r13, rbp		48
0040101C	push r13		53
0040101D	mov r13, rbp		48
0040101E	push r13		53
0040101F	mov r13, rbp		48
00401020	push r13		53
00401021	mov r13, rbp		48
00401022	push r13		53
00401023	mov r13, rbp		48
00401024	push r13		53
00401025	mov r13, rbp		48
00401026	push r13		53
00401027	mov r13, rbp		48
00401028	push r13		53
00401029	mov r13, rbp		48
0040102A	push r13		53
0040102B	mov r13, rbp		48
0040102C	push r13		53
0040102D	mov r13, rbp		48
0040102E	push r13		53
0040102F	mov r13, rbp		48
00401030	push r13		53
00401031	mov r13, rbp		48
00401032	push r13		53
00401033	mov r13, rbp		48
00401034	push r13		53
00401035	mov r13, rbp		48
00401036	push r13		53
00401037	mov r13, rbp		48
00401038	push r13		53
00401039	mov r13, rbp		48
0040103A	push r13		53
0040103B	mov r13, rbp		48
0040103C	push r13		53
0040103D	mov r13, rbp		48
0040103E	push r13		53
0040103F	mov r13, rbp		48
00401040	push r13		53
00401041	mov r13, rbp		48
00401042	push r13		53
00401043	mov r13, rbp		48
00401044	push r13		53
00401045	mov r13, rbp		48
00401046	push r13		53
00401047	mov r13, rbp		48
00401048	push r13		53
00401049	mov r13, rbp		48
0040104A	push r13		53
0040104B	mov r13, rbp		48
0040104C	push r13		53
0040104D	mov r13, rbp		48
0040104E	push r13		53
0040104F	mov r13, rbp		48
00401050	push r13		53
00401051	mov r13, rbp		48
00401052	push r13		53
00401053	mov r13, rbp		48
00401054	push r13		5



## How Does the Meter Capture Plug-in Work?



- 1 A task is created to automatically retrieve meter readings from a networked copier or printer at prescribed intervals (e.g., daily, weekly, monthly).
- 2 The IT manager can view the retrieved meter readings and/or export them to a CSV file.

**Canon**  
*image*ANYWARE

Visit our Web site at [www.imageWARE.com](http://www.imageWARE.com)

A Smarter Way to Work

CANON is a registered trademark of Canon Inc. in the United States and may also be a registered trademark or trademark in other countries. IMAGEWARE is a registered trademark of Canon U.S.A., Inc. in the United States and is a trademark of Canon Inc. in certain other countries. IMAGEANYWARE is trademark of Canon. All other referenced product names and marks are trademarks or registered trademarks of their respective owners and are hereby acknowledged.  
Specifications and availability subject to change without notice.  
©2008 Canon U.S.A., Inc. All rights reserved.

1-800-OK-CANON  
[www.usa.canon.com](http://www.usa.canon.com)

Canon U.S.A., Inc.  
One Canon Plaza  
Lake Success, NY 11042





## imageWARE Enterprise Management Console

### Address Book Management Plug-in

Centralize management of all Address Books on imageRUNNER® devices.

The optional Address Book Management Plug-in for imageWARE Enterprise Management Console lets you create Address Books for distribution to—and retrieval from—all supported imageRUNNER devices on your network.

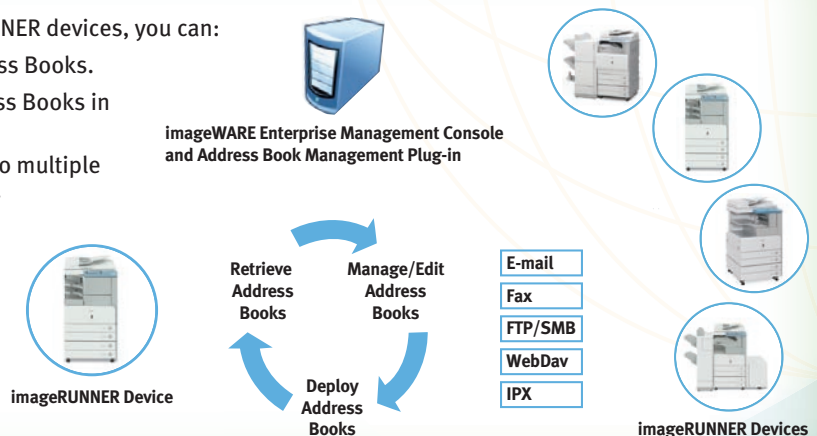
Using this Plug-in, you can:

- **Centrally manage all imageRUNNER device Address Books** to efficiently organize and control all address information in one location.
- **Create and deploy Address Books to multiple imageRUNNER devices**, eliminating the need to manually input and duplicate the same Address Book on each device.
- **Retrieve multiple Address Books from any imageRUNNER device**, then edit and deploy them to other imageRUNNER devices. This avoids having to make edits from scratch before distribution.

#### How Does the Address Book Management Plug-in Work?

From any and all imageRUNNER devices, you can:

- 1 Retrieve multiple Address Books.
- 2 Manage and edit Address Books in one location.
- 3 Deploy Address Books to multiple devices simultaneously.





# Resource Management Plug-in

Control all resource data for imageRUNNER devices.

The optional Resource Management Plug-in for imageWARE Enterprise Management Console manages and distributes resource data for networked imageRUNNER devices.

Using this Plug-in, you can:

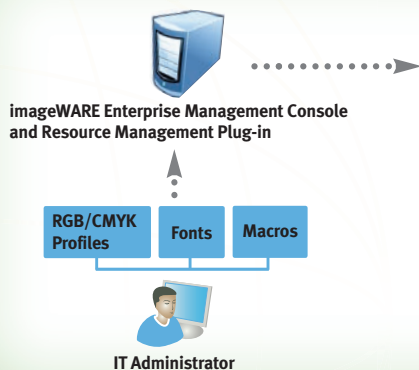
- **Centralize management of imageRUNNER resource data** such as fonts, color profiles, and macros.
- **Upload and distribute resources to network devices** and delete any resource.

- **Create and manage “resource sets”** of the same resource type to distribute multiple resources simultaneously.

## System Requirements

The Address Book Management and Resource Management Plug-ins must be used with imageWARE Enterprise Management Console and conform to the same system requirements.

### How Does the Resource Management Plug-in Work?



IT Administrator can easily resource data on multiple imageRUNNER devices such as RGB/CMYK profiles, fonts, and macros.

**Canon**  
*image*ANYWARE

Visit our Web site at [www.imageWARE.com](http://www.imageWARE.com)

A Smarter Way to Work

CANON is a registered trademark of Canon Inc. in the United States and may also be a registered trademark or trademark in other countries. IMAGEWARE is a registered trademark of Canon U.S.A., Inc. in the United States and is a trademark of Canon Inc. in certain other countries. IMAGEANYWARE is trademark of Canon. All other referenced product names and marks are trademarks or registered trademarks of their respective owners and are hereby acknowledged. Specifications and availability subject to change without notice. ©2008 Canon U.S.A., Inc. All rights reserved.

1-800-OK-CANON  
[www.usa.canon.com](http://www.usa.canon.com)

Canon U.S.A., Inc.  
One Canon Plaza  
Lake Success, NY 11042





## imageWARE Enterprise Management Console

### imageWARE Enterprise Management Console V2.1.0 Server Requirements:

Hardware (Minimum):	<b>Web Server</b> Pentium® III, 1GHz or faster ( <i>Recommended: Pentium IV 2GHz or higher</i> ) 512MB or more RAM 100MB HDD Space <i>To use imageWARE Enterprise Management Console in combination with a SQL database Server, 1GB of free hard disk space is required. (Recommended: 10GB or more)</i>
Hardware (Minimum):	<b>Database Server</b> 1GB or more ( <i>Recommended: 10GB or more</i> ) <i>Other hardware requirements depend on the system requirements of the database software to use. (For more information, see the system requirements for each product).</i>
Software Operating System:	<b>Web Server</b> Microsoft® 2000 Professional/Server (SP4) Microsoft Windows® XP Professional (SP2) Microsoft Windows XP Professional (SP3) Microsoft Windows Server 2003 Enterprise Edition (SP2) Microsoft Windows Server 2003 Standard Edition (SP2) Microsoft Windows Server 2003 R2 Enterprise Edition (SP2) Microsoft Windows Server 2003 R2 Standard Edition (SP2) Microsoft Windows Vista® Ultimate/Business/Enterprise (SP1)
Web Server:	Microsoft Internet Information Services 5.0/5.1/6.0 /7.0
Software Operating System:	<b>Database Server</b> <b>Windows 2000/XP/Server 2003</b> Microsoft SQL Server 2000 Service Pack 4 Microsoft SQL Server 2000 Desktop Engine Microsoft SQL Server 2005 Service Pack 2* Microsoft SQL Server 2005 Express Edition Service Pack 2*  <b>Windows Vista</b> Microsoft SQL Server 2005 Service Pack 2* Microsoft SQL Server 2005 Express Edition Service Pack 2*
Software Runtime Environment:	Microsoft .NET Framework <i>(The versions of .NET Framework supported by each operating system are indicated below.)</i>

	Windows 2000	Windows Server 2003	Windows XP	Windows Vista
.NET Framework 2.0	Yes	Yes**	Yes	Yes***
.NET Framework 2.0 SP1	No	Yes	Yes	Yes†
.NET Framework 3.0	No	Yes	Yes	Yes††
.NET Framework 3.0 SP1	No	Yes	Yes	Yes†
.NET Framework 3.5	No	Yes	Yes	Yes



### imageWARE Enterprise Management Console Client Workstation Requirements:

Operating Systems Supported:	Microsoft Windows 2000 Professional (SP4) Microsoft Windows 2000 Server (SP4) Microsoft Windows XP Home Edition (SP2) Microsoft Windows XP Professional (SP2) Microsoft Windows XP Home Edition (SP3) Microsoft Windows XP Professional (SP3) Microsoft Windows Server 2003 Enterprise Edition (SP2) Microsoft Windows Server 2003 Standard Edition (SP2) Microsoft Windows Server 2003 R2 Enterprise Edition (SP2) Microsoft Windows Server 2003 R2 Standard Edition (SP2) Microsoft Windows Vista Home Basic (SP1) Microsoft Windows Vista Home Premium (SP1) Microsoft Windows Vista Ultimate (SP1) Microsoft Windows Vista Business (SP1) Microsoft Windows Vista Enterprise (SP1)
Web Browser Supported:†††	Microsoft Internet Explorer 6.0 SP1 or later Microsoft Internet Explorer 7.0
Display:	SVGA 800 x 600 or higher resolution, 16-bit (65,536 colors) or higher
Number of Devices:	1,000 supported per server

#### Footnotes:

- \* It is necessary to install .NET Framework 2.0 or .NET Framework 3.0 and Microsoft Data Access Components 2.8 (Service Pack 1) to use SQL Server 2005 or SQL Server Express as the database.
- \*\* To use .NET Framework 2.0 in Windows Server 2003 R2, add .NET Framework 2.0 from [Control Panel] > [Add/Remove Programs] > [Add/Remove Windows Components].
- \*\*\* Equivalent to being installed, as .NET Framework 3.0 is installed by default.
- † Equivalent to being installed if you install .NET Framework 3.5.
- †† Installed by default.
- ††† imageWARE Enterprise Management Console requires JavaScript. If JavaScript is disabled, it must be enabled in Internet Explorer. imageWARE Enterprise Management Console requires the use of cookies, so enable your Web browser cookie settings.



Visit our Web site at [www.imageWARE.com](http://www.imageWARE.com)

## A Smarter Way to Work

Microsoft, Windows, and Windows Vista are registered trademarks of Microsoft Corporation in the United States and/or other countries. Pentium is a trademark or registered trademark of Intel Corporation or its subsidiaries in the United States and/or other countries. CANON is a registered trademark of Canon Inc. in the United States and may also be a registered trademark or trademark in other countries. IMAGEWARE is a registered trademark of Canon U.S.A., Inc. in the United States and is a trademark of Canon Inc. in certain other countries. IMAGEANYWARE is trademark of Canon. All other referenced product names and marks are trademarks or registered trademarks of their respective owners and are hereby acknowledged. Specifications and availability subject to change without notice.  
©2008 Canon U.S.A., Inc. All rights reserved.

1-800-OK-CANON  
[www.usa.canon.com](http://www.usa.canon.com)

Canon U.S.A., Inc.  
One Canon Plaza  
Lake Success, NY 11042



PRINTED ON RECYCLED  
PAPER IN THE U.S.A.





## imageWARE Enterprise Management Console

### Accounting Management Plug-in

#### Track Document Usage and Control Costs

In a business environment characterized by escalating expenses and the pressure to minimize them, it's surprising that the cost of utilizing office equipment isn't managed more aggressively. Most Fortune 500 companies could not quantify the total spending associated with the use of basic equipment such as copiers, fax machines, and network printers. That is, until now.

#### Introducing Accounting Management Plug-in

The Accounting Management Plug-in is a modular upgrade to the imageWARE Enterprise Management Console device management framework. This com-

prehensive Web-based software tracks, analyzes, and recovers costs associated with all networked output devices, including printers, fax machines, and copiers. With this one application, not only can IT administrators understand document output costs, they can also realize their return on investments.

Using Accounting Management Plug-in, you can:

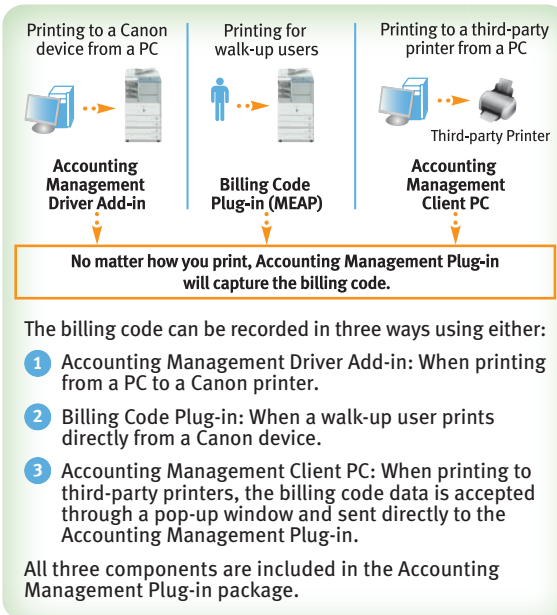
- Track document output costs
- Offer charge-back capability with an accurate collection of billing data—on a per-project basis—for all your copies, prints, faxes, and scans
- Enforce document-level print restriction, discouraging the use of higher-cost machines and increasing overall security
- Quickly generate ROI reports
- Provide simple and efficient billing code management
- Chart the optimal deployment of office equipment





## Simple and Efficient Billing Code Management

The Accounting Management Plug-in provides an efficient cost recovery solution to any organization looking to charge its clients for copies, prints, faxes, and scans. For all your imageRUNNER® devices enabled with MEAP® technology, a simple-to-use MEAP application is included. When using this program, user authentication and billing codes are input from the device's touch-panel, providing simple organization to all jobs performed by the imageRUNNER device. For optimal efficiency, users can also enter billing data from their workstations.



## Knowledge is Power

The Accounting Management Plug-in gives you a detailed snapshot of your organization's resources. Through this application, users can control their costs through a number of advanced capabilities:

- **Track by Paper Type:** Analyze and manage cost by paper type and size.
- **Track by Individual, Group, or Department:** Determine how devices are being used.
- **Single- or Double-sided Output:** Account for single- and double-sided output and N-up print/copy output.
- **Device Paper Consumption and Device Usage Costs:** Account for pages output, sheets used, and costs incurred by each device.
- **Output Restriction:** Distinguish between color and black-and-white jobs and set usage limits based on the number of clicks or predetermined cost.
- **Automatic Reporting:** Schedule automatic reporting and receive reports via e-mail.
- **Advanced Analysis:** Export accounting and analysis reports as CSV files for advanced analysis using a bundled Microsoft® Excel macro.
- **Web-based Access:** Generate reports or any other administrative functions from anywhere on the network.

**Canon**  
*image*ANYWARE

Visit our Web site at [www.imageWARE.com](http://www.imageWARE.com)

A Smarter Way to Work

Microsoft is a registered trademark of Microsoft Corporation in the United States and/or other countries. CANON, MEAP, and IMAGERUNNER are registered trademarks of Canon Inc. in the United States and may also be registered trademarks or trademarks in other countries. IMAGEWARE is a registered trademark of Canon U.S.A., Inc. in the United States and is a trademark of Canon Inc. in certain other countries. IMAGEANYWARE is trademark of Canon. All other referenced product names and marks are trademarks or registered trademarks of their respective owners and are hereby acknowledged. Specifications and availability subject to change without notice. © 2008 Canon U.S.A., Inc. All rights reserved.

1-800-OK-CANON  
[www.usa.canon.com](http://www.usa.canon.com)

Canon U.S.A., Inc.  
One Canon Plaza  
Lake Success, NY 11042





## imageWARE Enterprise Management Console

### Access Management Plug-in

#### Complete imageRUNNER® Control

Now that you've purchased a new Canon Color imageRUNNER device, controlling its user access is the first step toward maintaining high security and preventing abusive color usage.

The Canon Access Management System allows you to configure users' access rights on a feature-by-feature basis on your imageRUNNER device.

By using the Access Management System, color printing is only available to those who require it. To further enhance document security on your imageRUNNER device, the Access Management System can also restrict many frequently used features, such as access to Web browsing, e-mail, and faxing. This is just one of the many unique features of the Access Management System.

#### Built-in Roles

The Access Management System provides predefined roles for every business user: Administrator, Power User, Limited User, and Guest. Additional custom roles can be defined to work in conjunction with the predefined roles to fine-tune access control.

#### Enterprise Scalable

- Access Management System is suitable for any business concerned with MultiFunction Printer (MFP) security, regardless of company size.
- With the Web-based operation of the Access Management System, IT administrators can easily set up roles and user access on individual devices.
- Using the optional Access Management Plug-in, IT administrators also have the power to centrally manage multiple devices equipped with the Access Management System.
- The Access Management Plug-in provides Active Directory integration for quick retrieval of large user lists and groups.

#### Controllable Restrictions Using the Access Management System

<b>Copy</b> <ul style="list-style-type: none"><li>- Color copying</li><li>- Two-sided copies</li><li>- Page layout</li></ul>	<b>Mail Box</b> <ul style="list-style-type: none"><li>- Print/color print</li><li>- Two-sided printing</li><li>- Page layout</li></ul>
<b>Send</b> <ul style="list-style-type: none"><li>- Destination type</li><li>- Specific address domains</li><li>- Address Book access</li><li>- Device signature PDF</li></ul>	<b>MEAP® Applications</b> <ul style="list-style-type: none"><li>- Features for applications can be restricted separately</li></ul>
<b>Web Access</b>	<b>Print Job</b>



## ROI with Canon's Access Management System

The ability to control enterprise-wide access to print, fax, and Web features on your MFPs is a significant step toward controlling expenditures and maintaining security. The Access Management System Plug-in is a simple solution that can be implemented today to provide effective cost control and heightened confidentiality.

## System Requirements

The Access Management System Plug-in must be used with imageWARE Enterprise Management Console and conforms to the same system requirements.

### Access Management System Scenario

#### imageRUNNER device *without* Access Management System (Unprotected)

- No features are restricted.
- All employees can utilize all features of the device.



User A

Though he doesn't need color printing/copying, user has no restriction.

User C

User never prints two-sided documents.

User B

User can send unrestricted e-mails and faxes.

User D

A company contractor can use the custom MEAP application developed for employee use only.

#### imageRUNNER device *with* Access Management System (Protected)

- Based on requirement, IT administrators create roles for all users on the imageRUNNER device.
- All users must log-on to the imageRUNNER device and, based on their role, certain features will be disabled.



User A

With the Access Management System, user can only print in black and white.

User C

By default, all printing will be two-sided.

User B

For this user, e-mail and fax functions are restricted.

User D

User now must utilize the Guest account; access to the MEAP application is prohibited.

**Canon**  
*image*ANYWARE

Visit our Web site at [www.imageWARE.com](http://www.imageWARE.com)

A Smarter Way to Work

CANON, MEAP, and IMAGERUNNER are registered trademarks of Canon Inc. in the United States and may also be registered trademarks or trademarks in other countries. IMAGEWARE is a registered trademark of Canon U.S.A., Inc. in the United States and is a trademark of Canon Inc. in certain other countries. IMAGEANYWARE is trademark of Canon. All other referenced product names and marks are trademarks or registered trademarks of their respective owners and are hereby acknowledged. Specifications and availability subject to change without notice. ©2008 Canon U.S.A., Inc. All rights reserved.

1-800-OK-CANON  
[www.usa.canon.com](http://www.usa.canon.com)

Canon U.S.A., Inc.  
One Canon Plaza  
Lake Success, NY 11042



PRINTED ON RECYCLED  
PAPER IN THE U.S.A.