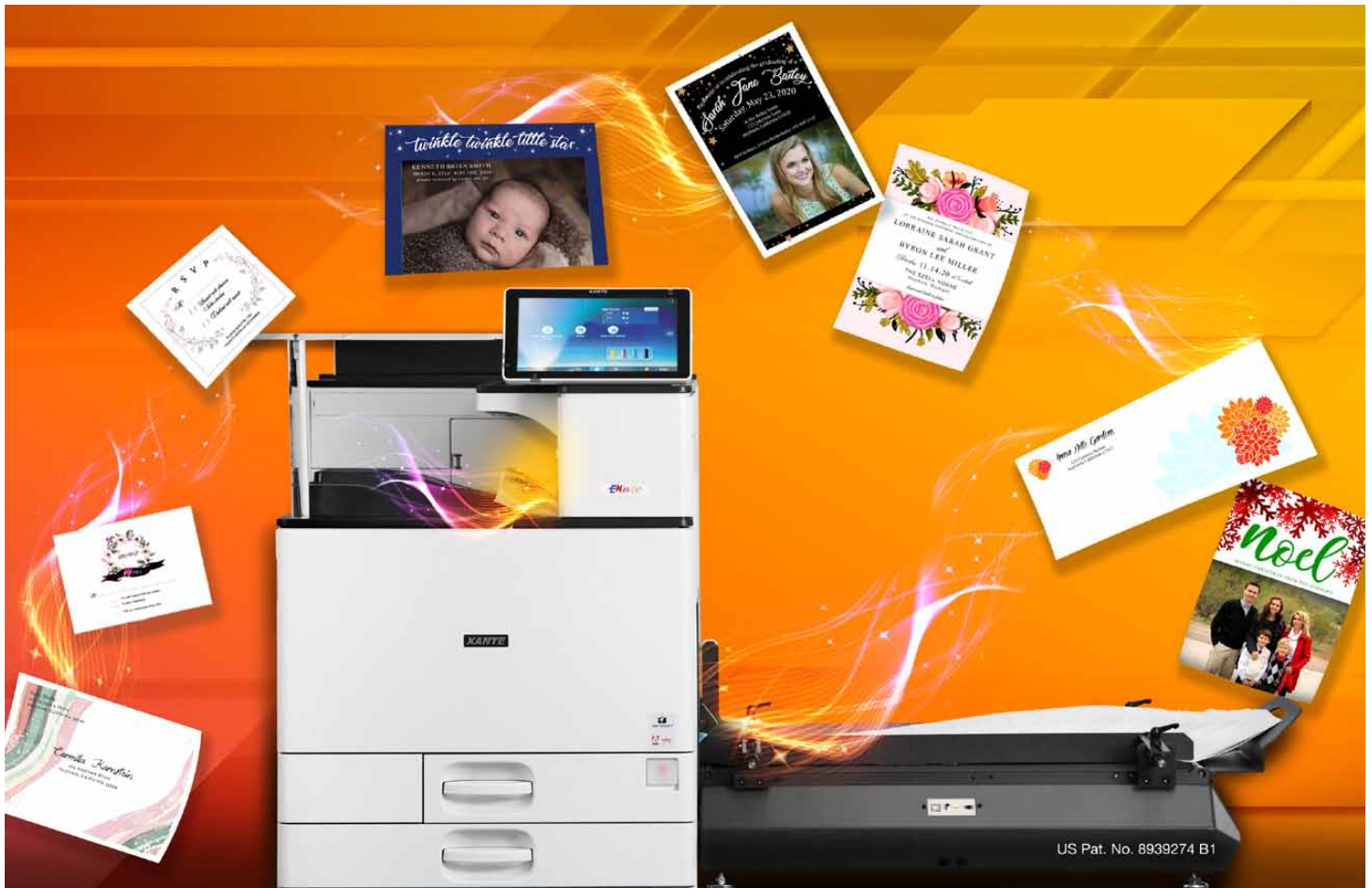


EN/vite

XANTÉ

Multi-Media Digital Press



- Meets high-quality demands of stationery and specialty print providers
- Includes Enterprise SP High-Speed Feeder
- Prints on a wide variety of media and sheet sizes
- High definition color technology
- Includes iQueue Simply Brilliant Workflow with hundreds of free design templates
- Output waterproof and laser safe
- Variable data at full speed

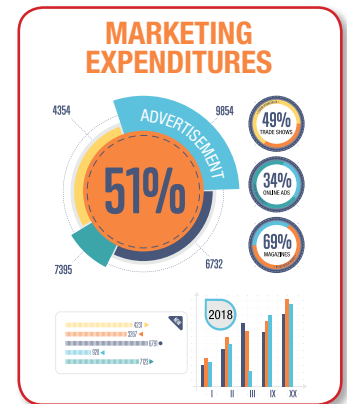


The EnVite Multi-Media Digital Press with the patented Enterprise SP High-Speed Feed System delivers extremely high-quality, fast and fully automated print on specialty media at a very affordable price for the demanding stationery and specialty printing markets. The Enterprise's groundbreaking design fits comfortably in the limited floor space of stationery stores. The complete digital solution is powered by iQueue Simply Brilliant Adobe® Postscript PDF Workflow that offers extensive variable data printing tools included at no extra charge to make each print job unique and personalized. You can bring your own designs into iQueue or choose from more than a **thousand free design templates** and **specialty fonts** that are readily available.

Improve In-House Productivity

EnVite Multi-Media Digital Press allow you to do more for your customers, in-house

- Print on a wider variety of media and in a wider range of sheet sizes.
- Up to 3,500 full-color, fully-addressed A7-size envelopes per hour
- Features a lower cost per sheet
- Run full color jobs including variable data in one pass.
- iQueue Simply Brilliant Workflow automates prepress production and provides critical color adjustments.



Full color sheets, envelopes and cards

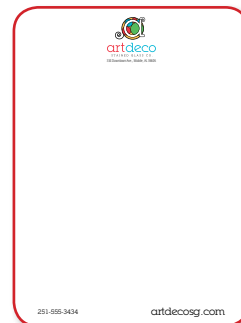


Label stocks



Booklets

NCR Forms



Astonishing Full-Color Results

The EnVite Multi-Media Digital Press features a multi-bit print engine that delivers production color and print quality your customers demand

- Resolutions up to 4800 for exceptional sharpness, clarity and color quality.
- iQueue can match any spot color that can be created with CMYK dead-on every time. Xanté's patented RightON® color matching technology makes spot color matching simpler than ever.
- New HD toner offers a wider color gamut. The smaller particles enable the EnVite Multi-Media Digital Press to capture subtle changes in color and tone.
- Output is waterproof and laser safe.

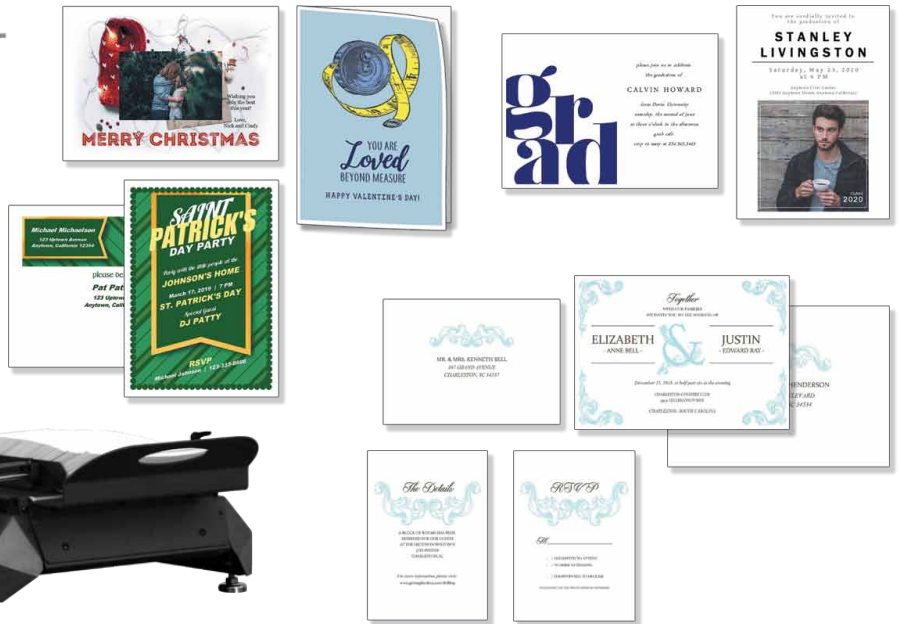
More Media / Feed Choices

Outstanding media flexibility allows you to offer your customers more and helps eliminate costly outsourcing

- Prints on a variety of stocks including: Uncoated, coated, NCR, card stocks, textured stocks, label stocks and vellum, linen, sueded, pearlized, and foil-lined envelopes (from 3.5" x 3.5" up to 13" x 49").
- **Prints on 18pt card stock (400gsm).**
- Print oversized sheets / banners up to 13" (330 mm) x 49.6" (1260 mm).

Over a thousand free design templates

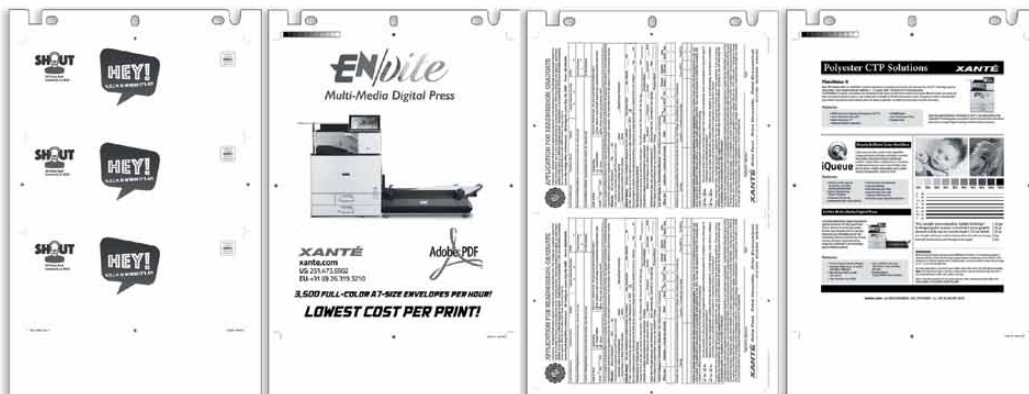
Powered by Xante's iQueue® workflow software, the EnVite provides stationery stores with rich personalization and customization tools to satisfy any requirement. Over a thousand templates and specialty fonts are readily available for downloading directly into iQueue. Start producing professionally designed stationery, invitations, announcements, wedding packages, holiday cards, business forms, and labels with iQueue right out of the box!



Computer-to-Plate

PlateMaker 8 INSIDE

Xanté is pleased to announce a revolutionary advancement in Computer-to-plate (CTP) printing technology. The revolutionary EnVite Multi-Media Digital Press with PlateMaker 8 inside is a brand new polyester CTP system. Specifically designed for small commercial printers, this solution is low cost, high quality, chemical free, and fast. The best part is that it's all contained WITHIN the EnVite which is already the best way to print your envelopes, NCR forms, stationery, invitations, announcements and more!



PlateMaker 8 Specifications

Myriad 2 Plates	Available in the following sizes: 10" x 15" - 13" x 19 ⁷ / ₈ "
340mm Option	13 ³ / ₈ " x 19 ⁷ / ₈ " (340mm x 505mm)
Plate Thickness	4 mil plates



EN/vite

Multi-Media Digital Press

SYSTEM SPECIFICATIONS

ENTERPRISE SP COMPACT HIGH-SPEED FEEDER

Dimensions	33" x 11.5" x 20" (84cm x 29cm x 51cm)
Capacity	Load up to 500 #10 (241 x 105mm) Envelopes
Paper Sizes	3.5" x 3.5" (89 x 89 mm) - 13" x 25.5" (330 x 648 mm)
Paper Weights	16 - 68 lb. Bond - 18pt Cover (60 - 400 gsm)

SUPPLIES

Consumables	Yield (ISO 19,798 Yields)	Consumables	Yield
Black Toner	43,000 pages	Yellow Toner	34,000 pages
Mag. Toner	34,000 pages	Cyan Toner	34,000 pages
Fuser	160,000 pages*	Imaging Drums	60,000 pages*
Image Transfer Belt	200,000 pages*		

Part Numbers

Cyan Toner	200-100414	Black Drum	200-100421
Magenta Toner	200-100415	CMY Drum Set	200-100422
Yellow Toner	200-100416		
Black Toner	200-100417		
110V Fusing Unit	200-100424	110V A6/A7 Fusing Unit	200-100426
220V Fusing Unit	200-100425	220V A6/A7 Fusing Unit	200-100427
Transfer Belt	200-100423	Waste Toner Bottle	200-100387

ENvite ships with starter toner cartridges that yield 21,500 pages for Black and 17,000 pages for each color. *based on letter/A4 size pages at 5% coverage. Use only Xanté or Xanté approved consumables.

ENGINE SPECIFICATIONS

Configuration	Desktop
Technology	Laser-beam scanning & electrophotographic printing with dual component toner development, 4-drum tandem method, output water proof and laser safe
Printing Speed	Color 60 ppm / Black & White 60 ppm / 75 #10s ppm 60, 26 and 17 ppm for letter/A4 depending on media thickness Envelopes less than 8.5" in width 25 ppm
Warm-Up Time	22 seconds or less
First Print Speed	8 seconds or less
Duplex Print Speed	Near 100% productivity for all paper sizes
Print Resolution	600, 1200, 2400 or 4800
Input Capacity	Standard: 2 x 550 sheets + 100-Sheet Bypass Tray
Output Capacity	Standard: 500 sheets face down
Fusers:	Standard and A6/A7 (6.25" up to 8" at full speed)
Paper Sizes	
Feed Tray 1:	Letter / A4
Feed Tray 2:	Min: 7.17" W x 5.83" L (182 x 148 mm) Max: 12" W x 18" L (320 x 457 mm)
Multi-Purpose Tray:	Min: 3.5" W x 3.5" L (89 x 89 mm) Max: 13" W x 49.6" L (330 x 1260 mm)*
High Capacity Tray:	8.5" W x 11" L (216 x 279 mm)
Dual Tray:	Min: 7.17" W x 5.83" L (182 x 148 mm) Max: 12" W x 18" L (320 x 457 mm)
Paper Weights	
First / Second Tray:	16 - 68 lb. Bond - 14pt Cover (60 - 320 gsm)
Bypass Tray:	16 - 68 lb. Bond - 18pt Card stock (60 - 400 gsm) Feed source for Labels, OHP and Envelopes
Duplex Unit:	60 - 256 gsm
Paper Types	Bond, Plain, Recycled, Preprinted, Special, Color, Letterhead, Card Stock, Glossy, Coated, Labels, OHPs and Envelopes (4 Bar, Monarch, #10, window* and larger)
Auto Duplex	Standard
Dimensions (Base Model)	23.2" W x 27" D x 28.6" H (587 x 685 x 725 mm) (Standard Configuration)
Weight (Base Model)	With consumables loaded (except toner) 187 lb. (85 kg)
Power	120-127V / 220-240V (50/60 Hz)
Operating Power	992W Consumption
Maximum Power	1.854 kw or less
Energy Saver	2.2W

PRINTER CONTROLLER (Standard)

CPU	Intel Atom Processor Bay Trail 1.75GHz
Memory	2 GB
Hard Disk Drive	320 GB HDD Standard on all models
Printer Languages	PCL 5c, PCL 6, RPCS, Adobe® PS® 3™, PDF Direct Print
Fonts	Standard: 45 PCL fonts, 13 Intl Fonts, 136 PS 3 fonts Optional: OCR and Barcode fonts available
Standard Interface	Ethernet (1000Base-T/100Base-TX/10Base-T), USB 2.0, SD Slot
Operating Systems	Windows 7 to current / Mac OS 10.7 to current



iQueue Mail

iQueue Simply Brilliant Workflow (Included)

Digital Color Workflow with Advanced Color Matching and File Management Tools

FULLY VERIFIED, CORRECTED, SORTED, AND BARCODED!

Available Features:

- USPS® certified address verification, correction, sorting, and barcoding
- Over a Thousand Design Templates
- Multi-Part Form Design
- Sequential Numbering
- Booklet Creation
- Universal Print Driver
- Independent CMYK Color Controls
- Patented Spot Color Matching
- Job Cost Estimator
- Full Imposition and Tiling
- Custom Barcode Generator
- Import Variable Data with Intelligent Mail barcodes*
- Automatic Creep Adjustment and more

XANTÉ

xante.com

US: 251.473.6502
EU: +31 (0) 26.319.3210



Adobe® PostScript® 3™

©2019 Xanté Corporation. All rights reserved. Xanté, iQueue, iQueue Mail and Right-On are trademarks or registered trademarks of Xanté Corporation. Adobe, Adobe PDF, and PostScript 3 are registered trademarks of Adobe Systems, Incorporated. USPS® is a registered trademark of the United States Postal Service. All other trademarks or registered trademarks are the property of their respective owners. The Specifications listed here are subject to change without notice.
*Paper size only. **Laser safe window envelopes only. Patent pending technology. *Call for details.
06.25.2019